

SEASONAL ROAD CLOSURES 2011

MAP 3 - BONANG

For further information contact
Parks Victoria Information Centre 13 1963
DSE Customer Service Centre on 13 6186
 or visit the Parks Victoria website at www.parkweb.vic.gov.au



SEE
MAP 4

SEE MAP 5B

ROADS CLOSED FROM THE THURSDAY AFTER THE QUEEN'S BIRTHDAY LONG WEEKEND UNTIL THE THURSDAY BEFORE THE MELBOURNE CUP WEEKEND 16/6/2011 TO 27/10/2011

ALPINE NATIONAL PARK

1. Blackguard Gully Track
2. Lauries Track
3. Armstrongs Track
4. Rosendale Track
5. Tingaringy Track
34. Ingram Track
35. Brown Break Track
36. Cameron Track
37. Bowen Track
38. Allan Track

SNOWY RIVER NATIONAL PARK

6. Bowen Track
7. Warm Corners Track
8. Deddick Trail
9. Bowen Link
10. Rich Knob Track
11. Waratah Flat Road
12. Monkey Top - Waratah Link
13. Monkey Top Track
31. Colling Track
32. Reeds Track
33. Warbisco Track

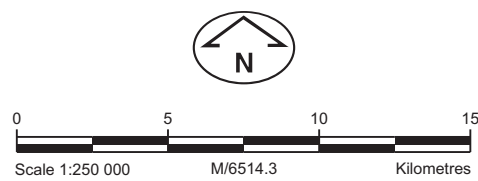
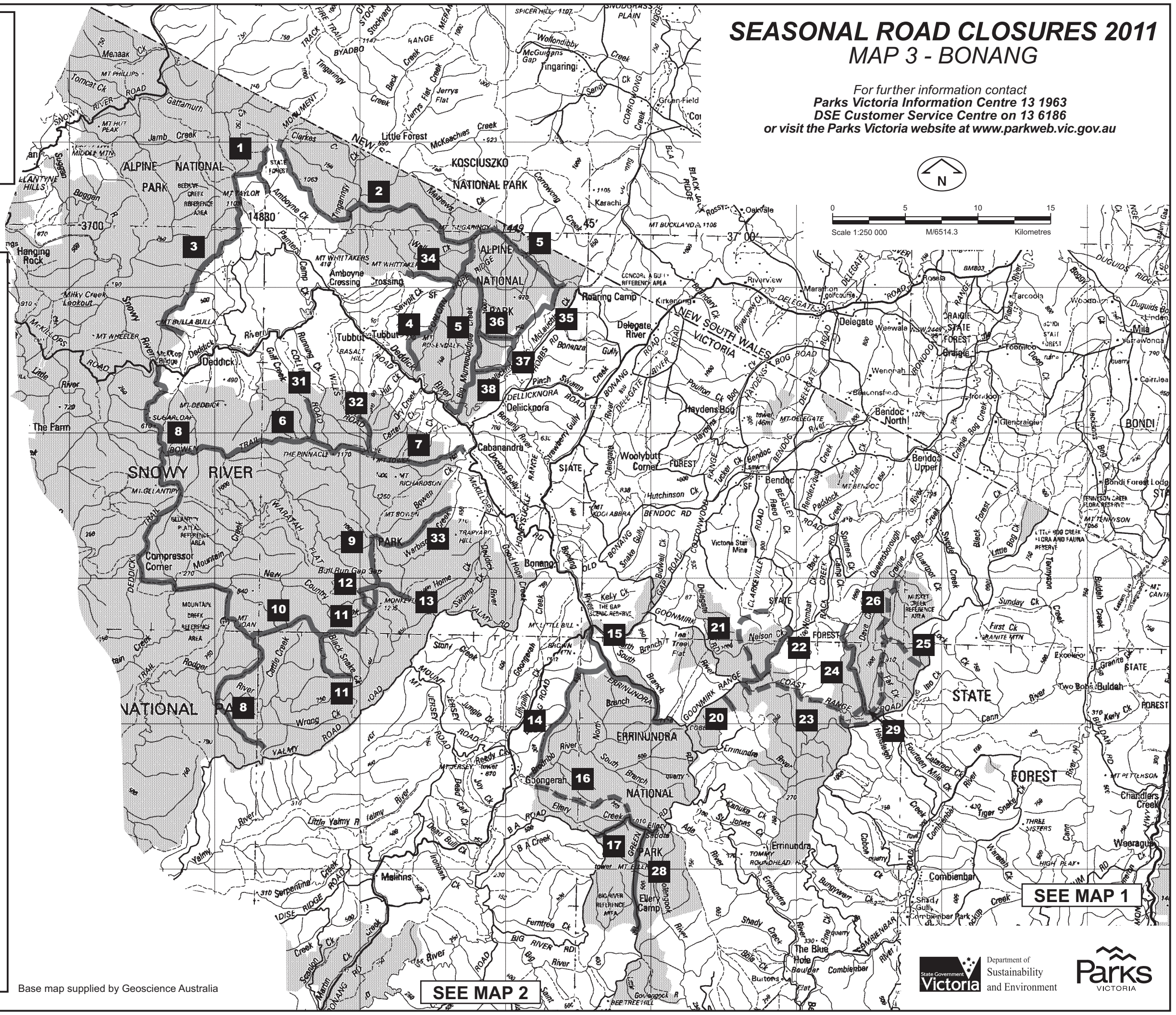
ERRINUNDRA NATIONAL PARK & STATE FOREST

14. Postmans Track
15. Errinundra Road (Gap Road to Alstergrens Road)
17. BA Road
20. Spotmill Track
22. Goonmirk Rocks Road
24. Hensleigh Creek Road
28. Greens Road (Ellery Camp Track to Ada Divide Track)
29. Short Cut Track

PERMANENT CLOSURES - Management Vehicles Only

16. Ellery Creek Track
21. Aspens Battery Track
23. Coast Range Road
25. Curley Track
26. Far Creek Track

These roads are closed to protect road surfaces and the environment, and for public safety. Road Closures may be extended beyond the dates shown, depending on weather conditions.



SEE MAP 1

SEE MAP 2

Base map supplied by Geoscience Australia