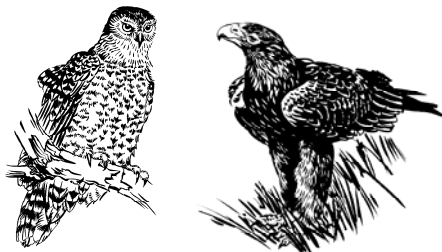


Cobboboonee National Park



Visitor Guide

“Cobboboonee belongs to our stories, our past and our future. Our Gunditjmara spirit flows across this land just like the Tyrendarra (lava) from Budj Bim and swimming Kooyang (eels). It is special to us and we ask that you care for it when you visit.” *Gunditjmara Traditional Owners*



"Aunty Betty King and Aunty Sandra Onus walked this Country, talking with all who would listen, sharing their vision, passion and connection to this special place. The owl and the eagle are two symbols of their enduring spirit here at Cobboboonee."

Enjoying the park

Cobboboonee National Park is a new park of lowland forests, heathlands and wetlands offering a wide range of activities for visitors.



Walking

There are a variety of walking tracks in the area, catering for all fitness levels.

The spectacular Great South West Walk treks through the park and continues on through several of south-west Victoria's other great parks. There are some 'step on step off' hikes allowing for shorter or longer overnight combinations. A separate brochure covering the entire 250-kilometre walk is available from Visitor Information Centres at Portland, Nelson, Hamilton and Warrnambool and on-line at www.greatsouthwestwalk.com. *More walks are listed overleaf.*



Camping and picnics

Jackass Fern Gully Picnic and Camping Area, Wright Horse Camp and Surry Ridge Picnic Area are the main picnic and campgrounds. These campsites and their surrounds are flat and provide reasonable access for people with disabilities. Each has toilet facilities, picnic tables and fireplaces.



Horse riding

Great Cobboboonee Horse Trail
60km - 3 days (medium)

This ride extends along 60kms of forest roads, running north south.

The tour starts at the intersection of the Portland-Nelson Rd and Wright Swamp Road. The trail uses the Wright Horse Camp and tranquil Jackass Fern Gully Picnic and Camping Area for overnight camping.

Short walks to break the ride are also available at this site. Although the trail follows quiet forest roads, take care of all traffic. The trail can be shortened by taking some of the east-west running roads.

The Cobboboonee Horse Trail

10km - 4 hour return (easy)

Starts near the intersection of Jennings and Blackwoods Roads, and follows existing forest roads with views into surrounding beef and dairy farmland. Riders can take a short detour at the northern end of the ride to view the nearby Surry River. Take care when traffic passes. Horses are not permitted on walking tracks.



Touring by vehicle

One of the most popular touring routes is the Wood, Wine and Roses Forest Drive. This drive weaves for 90-kilometres between Portland and Heywood and takes in the scenic rural landscape, local wineries, a rose farm and both the Cobboboonee National Park and adjoining Forest Park.

Caring for Country

Through their rich culture Aboriginal people have been continually connected to Country - including the area now known as the Cobboboonee National Park - for tens of thousands of years. Members of the Gunditjmara community welcome and remind us that this cultural landscape is part of Australia's heritage, and ask that visitors respect the many significant sites within this area when visiting them. All cultural sites are protected by law.

"Ngatanwarr wartee pa kakay teen Gunditjmara mirring"; Welcome brothers and sisters to Gunditjmara Country.

Parks Victoria recognises this connection and acknowledges the Gunditjmara people as Traditional Owners of this area.

Be fire ready and stay safe

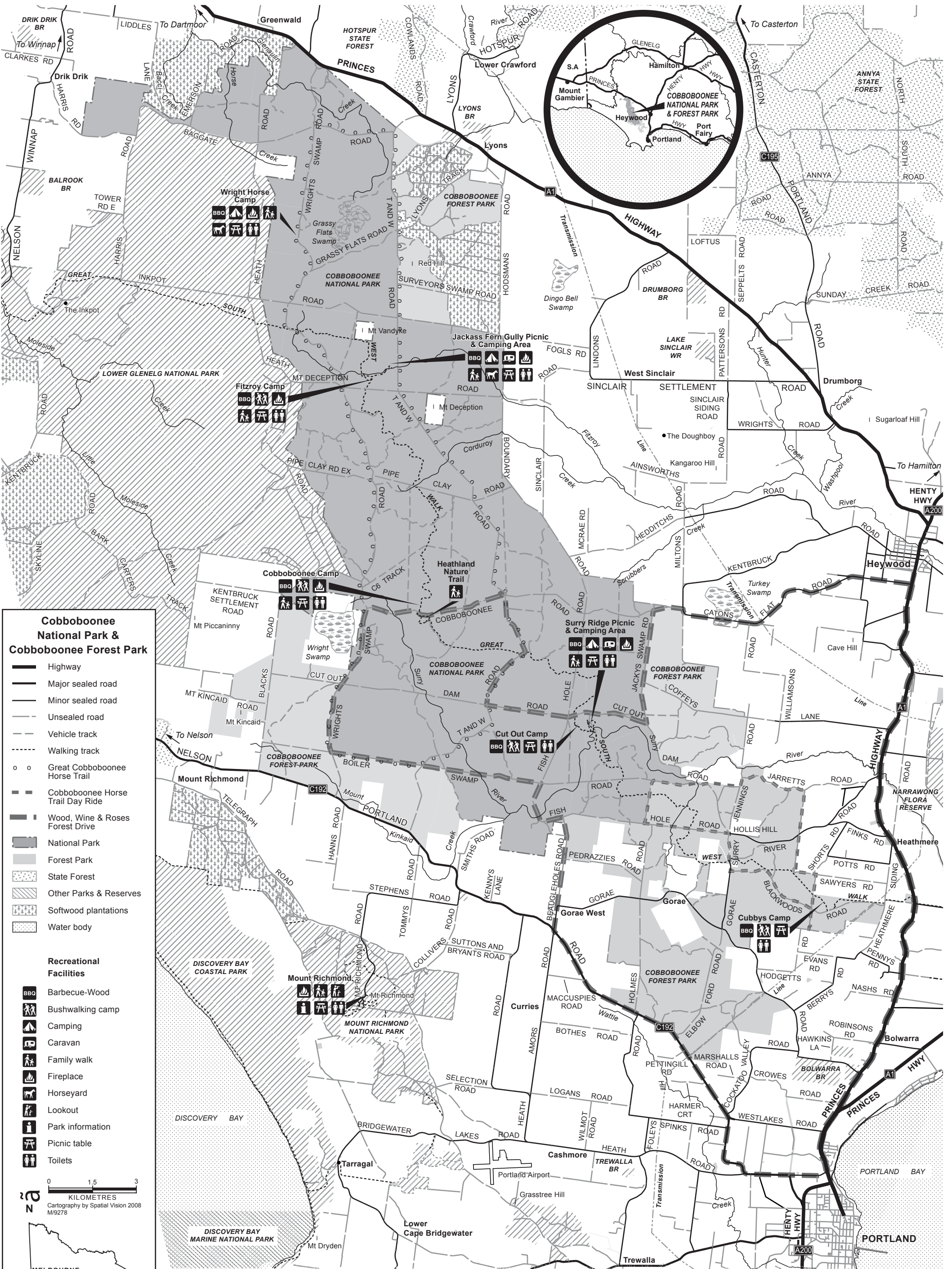
Many parks and forests are located in high fire risk areas. On days of forecast Code Red Fire Danger this park will be closed for public safety.

If you are already in the park you should leave the night before or early in the morning for your own safety.

Closure signs will be erected and rangers will patrol when possible, however you may not receive a personal warning that the park is closed so check the latest conditions by calling 13 1963 or visit www.parkweb.vic.gov.au

For up to date information on fires in Victoria or general fire safety advice call the Victorian Bushfire Information Line on 1800 240 667.





Cobobooonee National Park & Cobobooonee Forest Park

- Highway
- Major sealed road
- Minor sealed road
- Unsealed road
- Vehicle track
- Walking track
- Great Cobobooonee Horse Trail
- Cobobooonee Horse Trail Day Ride
- Wood, Wine & Roses Forest Drive
- National Park
- Forest Park
- State Forest
- Other Parks & Reserves
- Softwood plantations
- Water body

Recreational Facilities

- Barbecue-Wood
- Bushwalking camp
- Camping
- Caravan
- Family walk
- Fireplace
- Horseyard
- Lookout
- Park information
- Picnic table
- Toilets

0 1.5 3
KILOMETRES
Cartography by Spatial Vision 2008
M19278

MELBOURNE

For further information
Parks Victoria
Information Centre
Call **13 1963**
or visit the
Parks Victoria website
www.parkweb.vic.gov.au

Portland Maritime
Discovery Centre
Lee Breakwater Road
Portland, Victoria 3305
Tel: (03) 5523 2671
Nelson Visitor Information
Centre
(08) 8738 4051

Caring for the environment

All native plants and animals, archaeological sites, historic and cultural remains and geological features are protected by law and must not be disturbed, damaged or removed.

Dogs and other pets are not permitted in most parks and reserves.

Please take all rubbish home with you for disposal or recycling.

Vehicles, including motorbikes, may only be used on public roads. All drivers must be licensed and vehicles registered and roadworthy.

Firewood may be collected only for campfires within the park and should only be dead wood from the ground.

Please bring your own drinking water. Unless signed otherwise, water from any source within any park or reserve has not been treated and is therefore not considered to be fit for human consumption.

Park closures

Be prepared to leave early as **extreme weather may cause the closure of some park areas** for public safety.

Mobile Phones

You may not be in network range in some areas of the park. To be connected to Police, Ambulance or CFA, key in **112 then press the YES key**

Healthy Parks Healthy People

Visiting a park can improve your health, mind, body and soul. So, with over four million hectares of parkland available to Victorians, why not escape to a park today!



Exploring on foot

Completion times are conservative and intended as a guide only. Times may vary significantly depending on fitness level and hiking experience. The difficulty level is based on a number of factors including gradient, track length, track surface conditions and weather. Refer to track grades when choosing a walk.

Easy - mainly flat tracks. Most easy walks are suitable for family groups. Average level fitness.

Medium - consistent walking with some sustained climbs and descents. Good level fitness.

Hard - consistent walking in difficult terrain, including steep climbs and descents. High level fitness.



Heathland Nature Walk

3km - 40 minutes (easy)

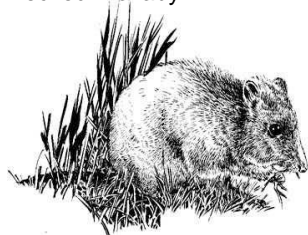
This short return walk takes you through picturesque heathland with colourful spring wildflower displays and panoramic views.



Tim's Loop Walk

1km - 30 minutes (easy)

The walk passes through the forest to the Surry River. Messmate, Swamp gums and Blackwood abound along the way and watch for koalas, Eastern Grey Kangaroos, and the smaller Red-Necked Wallaby.



This park provides habitat for the endangered Long-nosed Potoroo (*Potorous tridactylus*).



Hodgett's Loop Walk

(section of the Great South West Walk)

2km - 1 hour (easy)

Hodgett's Loop Walk (an extension of Tim's Loop Walk) is an easy walk taking visitors further south. The surrounding forest is home to a wide variety of plants and animals including towering Blackwoods, tree ferns and many small fungi. Powerful owls, Yellow-bellied gliders and kingfishers can be seen, and evidence of smaller mammals such as potoroos and bandicoots are present.



Cobboboonee Camp to Cut-Out Camp

(section of Great South West Walk)

8km - 4 hours (medium)

This is an enjoyable flat walk through heathland and Messmate forest, suitable for walkers prepared to run a car shuttle. Alternatively, the walk can be done as a pleasant overnight return trip. A good walk for bird lovers and to see spring wildflowers.



Walking: Be Safe Be Prepared

- Always check weather conditions
- Wear sturdy footwear with a good tread
- Always carry a good quality map
- Always carry drinking water and food
- Walking tracks may involve rock steps, uneven and slippery track surfaces, water crossings and rock hopping
- Keep to the walking tracks, mind your footing and supervise children at all times
- On longer walks, carry protective clothing
- A hat, drinking water and sunscreen are essential in summer
- Be aware tree limbs may drop without warning



Fire

Fires may only be lit in fireplaces provided. No fires, including barbecues, may be lit on a day of Total Fire Ban. Cobboboonee National Park is in the **South West Total Fire Ban District**. It is your responsibility to know if it is a day of Total Fire Ban. If in doubt call the **Victorian Bushfire Information Line: 1800 240 667**.

Exploring the region

Cobboboonee Forest Park offers a diverse range of recreation activities. Visit the Department of Sustainability and Environment website www.dse.vic.gov.au

Budj Bim National Heritage Landscape was one of the first three landscapes in Victoria to be listed on the National Heritage List in July 2004. Budj Bim (Mt Eccles) is the source of the Tyrendarra lava flow, central to the history of the Gunditjmarra people. Gunditjmarra people manage the Indigenous heritage values of the Budj Bim National Heritage Landscape, through the Gunditj Miring Traditional Owners Aboriginal Corporation.

Mt Eccles National Park is home to a simmering volcano that once lit up the countryside with exploding fireballs and rivers of hot glowing lava. Discover the wonders of this volcanic landmark and enjoy the walking opportunities in the park.

Lower Glenelg National Park and Discovery Bay Coastal Parks offer some of Victoria's finest natural settings including the beautiful Glenelg River and estuary and the sweeping ocean beaches of Discovery Bay.

Mt Richmond National Park is the perfect place to have a picnic, take a walk or enjoy the magnificent views. It is home to spectacular spring wildflowers and abundant wildlife in unspoilt bushland.

How to get there

Cobboboonee National Park can be reached via the Princes Highway from Portland, Heywood or Dartmoor.

December 2010

Printed on Australian-made 100% recycled paper