

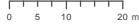
Fire Preparedness 2016/17

30 - Pauline Toner Butterfly N.C.R

Annual works
 Slashing
 Park Boundary

13/09/2016

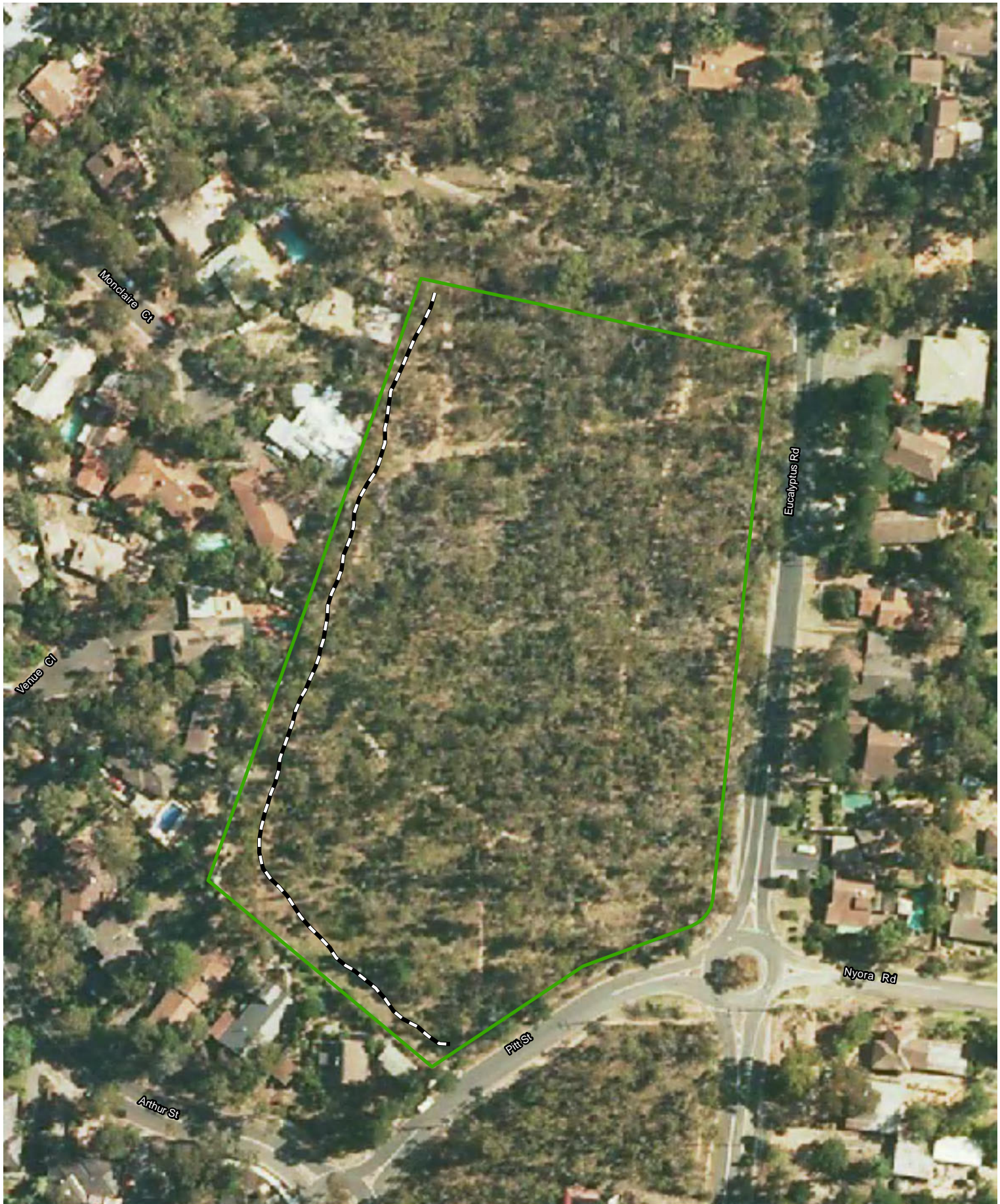
Coordinate System: GDA 1994 MGA Zone 55
 Projection: Transverse Mercator
 Datum: GDA 1994



Environment, Land, Water and Planning

Disclaimer: Parks Victoria does not guarantee that this data is without flaw of any kind and therefore disclaims all liability which may arise from you relying on this information.
 Data source acknowledgements: State Digital Mapbase, The State of Victoria and the Department of Environment, Land, Water & Planning.

This map is to be used as a guide only.
 For more detailed information please contact Parks Victoria on 13 1963.
 For specific planned burning information visit www.delwp.vic.gov.au/fire-and-emergencies



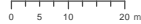
Fire Preparedness 2016/17

30 - Pauline Toner Butterfly N.C.R

Annual works
 ——— Slashing
 [Green Box] Park Boundary

13/09/2016

Coordinate System: GDA 1994 MGA Zone 55
 Projection: Transverse Mercator
 Datum: GDA 1994



Disclaimer: Parks Victoria does not guarantee that this data is without flaw of any kind and therefore disclaims all liability which may arise from you relying on this information.
 Data source acknowledgements: State Digital Mapbase, The State of Victoria and the Department of Environment, Land, Water & Planning.

This map is to be used as a guide only.
 For more detailed information please contact Parks Victoria on 13 1963.
 For specific planned burning information visit www.delwp.vic.gov.au/fire-and-emergencies