

Lerderderg State Park



Visitor Guide

The Lerderderg River, rising on the Great Dividing Range, has cut a rugged 300 metre deep gorge through sandstone and slate in its course southwards to the plains near Bacchus Marsh. The Gorge is the dominant feature of the **20,180** hectare park that protects a wide variety of vegetation from fern gullies to dry open forest, colourful displays of spring wildflowers and some interesting relics of early gold mining.



Exploring the park

The park is a great place for bushwalking, picnicking, camping, photography, nature study and car touring.

Walking

Walking is the best way to see the park, with a variety of walks from short, easy strolls to challenging overnight expeditions.

Picnicking

There are two major picnic areas in the park at Mackenzies Flat and O'Briens Crossing.

Mackenzies Flat Picnic Area, at the end of Lerderderg Gorge Road, has toilets, electric barbecues and picnic tables. This area is very popular with day visitors and people looking for a place to swim on hot days. Camping and dogs are not permitted in this picnic area or on the walking track to Grahams Dam.

O'Briens Crossing has toilets and fireplaces.

Shaw's Lake has a small picnic area with tables and a fireplace.

Camping

Campers should be prepared for a basic bush camping experience and be self-sufficient with drinking water. Carry it in or know how to make untreated water safe for drinking.

Walk-in camping is permitted in the Conservation Zone, but solid fuel fires are prohibited. Vehicle based camping is permitted at O'Briens Crossing.

Overnight walks, such as down the river from Blackwood to Mackenzies Flat, should only be undertaken by experienced bushwalkers. When camping beside the river, remember that river levels can rise suddenly after heavy rain.

A wide range of accommodation is available in and around Bacchus Marsh, Ballan, Blackwood and Gisborne.

Car touring and four wheel driving

O'Briens Crossing and Golden Point, near Blackwood, are the only two river crossings in the park suitable for two wheel drive vehicles. Along O'Briens Road there are panoramic views of Lerderderg Gorge and Wombat State Forest to the north. The road is unsealed but suitable for two wheel drive vehicles.

There are several four wheel drive tracks, mostly in the north and east of the park that connect O'Briens Road and the Lerderderg Gorge Road. Many of these tracks are closed over winter (June to October) for management purposes. Some tracks are closed to reduce the spread of Cinnamon Fungus.

How to get there

The park lies north of Bacchus Marsh between Blackwood and Gisborne. The main access roads to the park are Lerderderg Gorge Road north of Bacchus Marsh, or O'Briens Road running across the north of the park south of Blackwood.

Be fire ready and stay safe

On days of forecast Code Red Fire Danger this park will be closed for public safety.

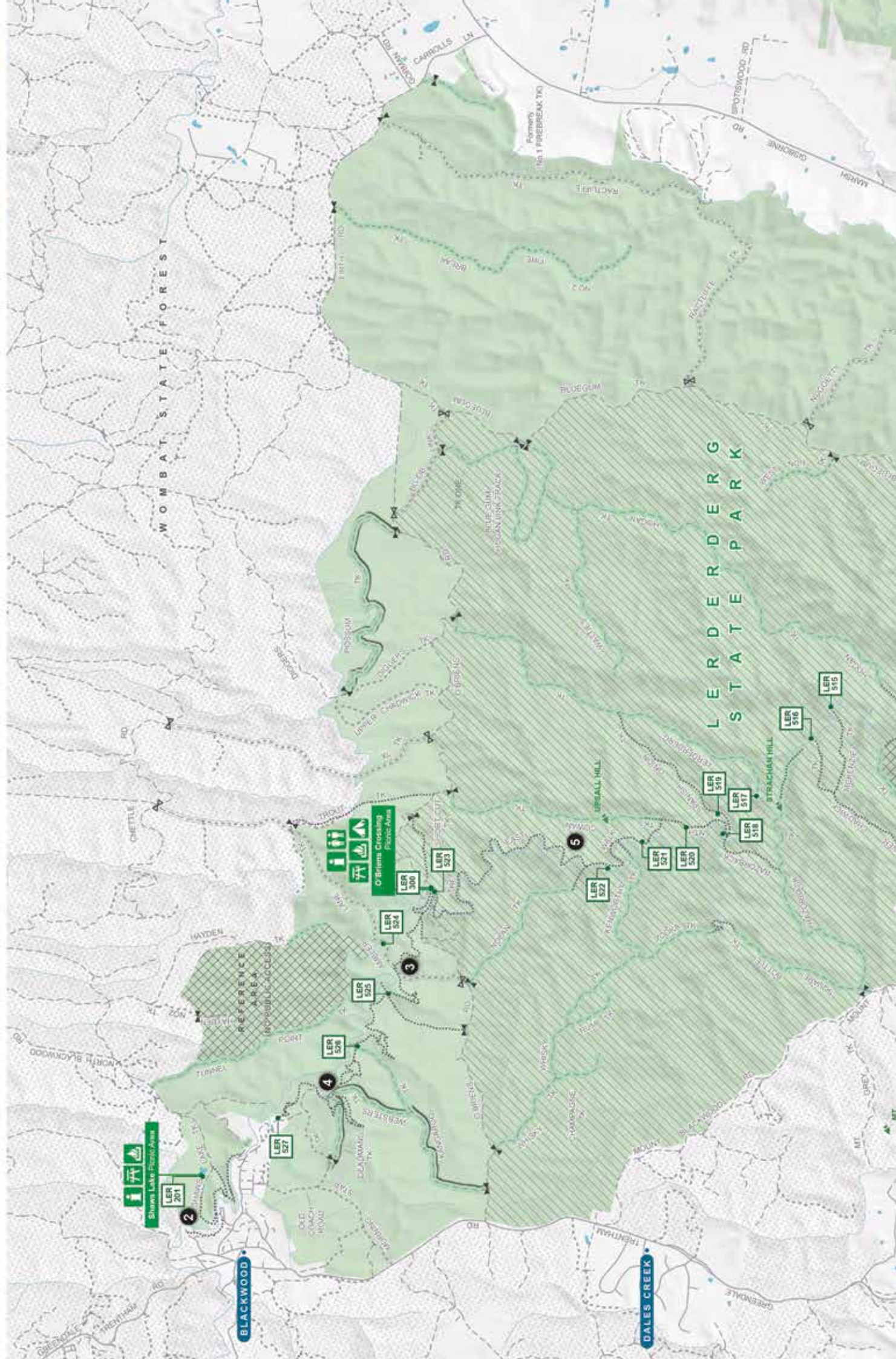
If you are already in the park you should leave the night before or early in the morning for your own safety.

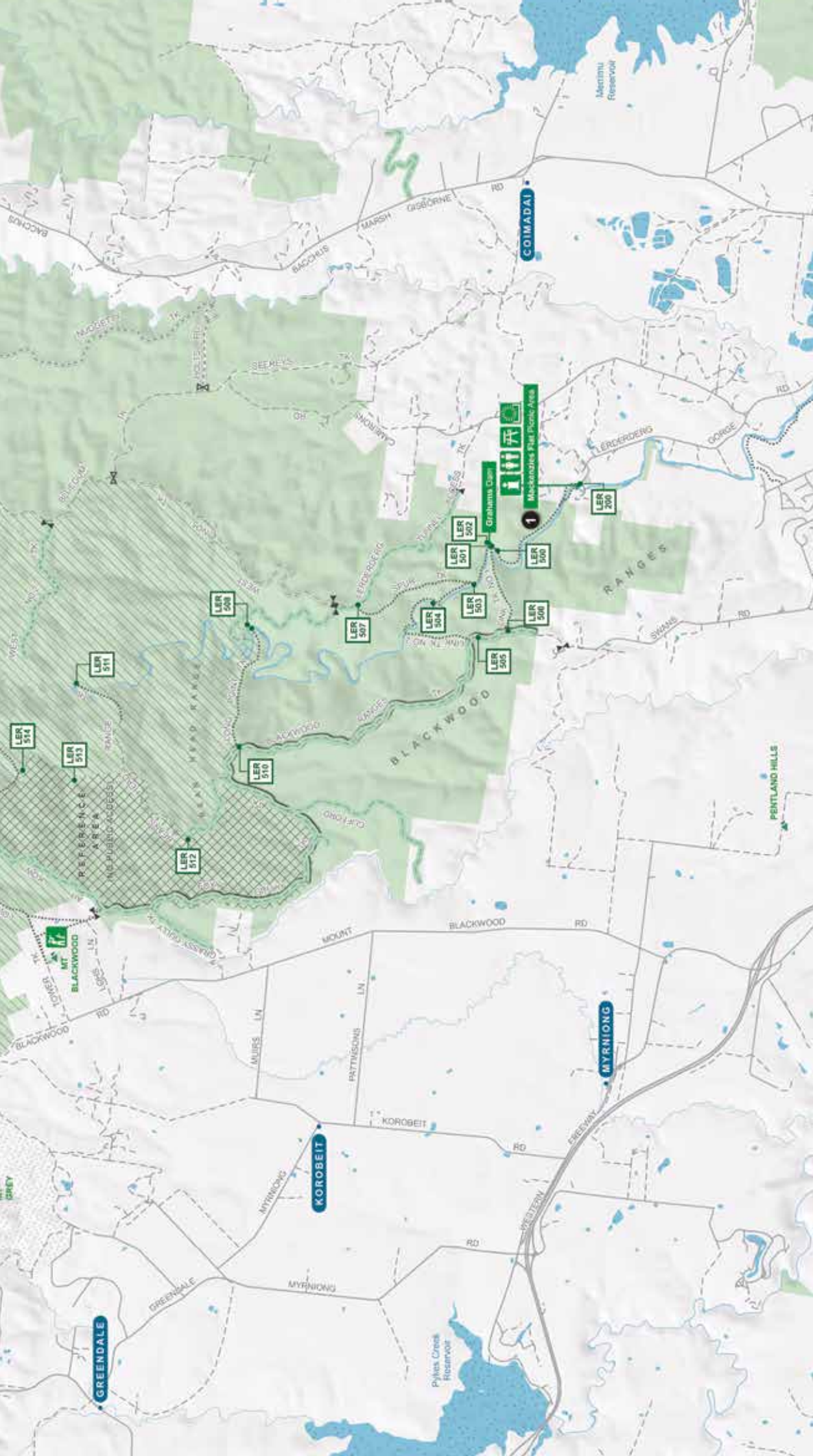
Closure signs will be erected and rangers will patrol where possible, however you may not receive a personal warning that the park is closed so check by calling **13 1963** or visit **www.parks.vic.gov.au**.

For up to date information on fires in Victoria or general fire safety advice call the **Victorian Bushfire Information Line** on **1800 240 667** or visit **cfa.vic.gov.au**.



Lerderberg State Park





www.parks.vic.gov.au

Disclaimer: Parks Victoria does not guarantee that this data is without error of any kind and therefore disclaims all liability which may arise from you relying on this information.

Geocentric Datum of Australia (GDA 94) Zone 55
 Map produced by Parks Victoria. This map supersedes all previous editions. Data source acknowledgements: State Digital Mapbase, The State of Victoria and Department of Sustainability and Environment.

Cartography by Parks Victoria 2011

- Park Information
- Toilets
- Picnic Table
- Barbecue - Electric
- Lookout
- Camping
- Sealed Road
- Unsealed Road
- Walking Track
- 4WD Track
- Management Vehicle Only
- Management Vehicle Only
- Seasonal Closure
- Walk reference number
- Lending State Park
- State Forest
- Waterbody
- Reference Area
- Conservation Zone (No fires)
- Cells
- Cells (seasonal closure)



For further information

Call Parks Victoria on **13 1963**
or visit www.parks.vic.gov.au

Bacchus Marsh Visitor
Information Centre
215 Main Street
Bacchus Marsh Vic 3340
Tel: 5367 7488

Caring for the environment

Help us look after your park
by following these guidelines:

Please take rubbish with you for
recycling and disposal

All native plants and animals
are protected by law

Dogs on a leash are permitted in
some areas of the park,
but are prohibited within the
Conservation Zone, Mackenzies
Flat Picnic Area and on the
walking track to Grahams Dam

Light fires only in fireplaces
provided. Never leave fires
unattended. No fires may be lit on a
day of **Total Fire Ban. Lerderderg
State Park** is in the **Central Total
Fire Ban District**

**It is your responsibility to know
if it is a day of Total Fire Ban.**
If in doubt call the **Victorian
Bushfire Information Line**
on **1800 240 667**

Park closures - Be prepared to leave
early as **extreme weather may
cause the closure of some park
areas** for public safety

Vehicles, including motor bikes,
may only be used on formed
open roads. Drivers must be
licensed and vehicles
registered and roadworthy

Healthy Parks Healthy People

Visiting a park can improve
your health, mind, body and
soul. So, with over four million
hectares of parkland available
to Victorians, why not escape
to a park today!



Short easy walks

1. Mackenzies Flat - Grahams Dam return (3km, 1 hour return)

Follow the river upstream from Mackenzies Flat Picnic Area to Grahams Dam, which is an attractive pool and is ideal for swimming.

2. Blackwood Mineral Springs - Shaws Lake - Sweets Lookout and return (3.5km, 1.5 - 2 hours)

Starting near the caravan camping area, this easy walk passes some historical features typical of the Blackwood area.

3. O'Briens Crossing - Byers Back Track - The Tunnel and return (3km, 1.5 hours)

The track follows an old water race around the steep Lerderderg valley and gives fine views of the river. At the second cross track, turn right and descend steeply to a point opposite The Tunnel.

Medium walks

4. Blackwood - Golden Point Road - Byers Back Track - O'Briens Crossing return (22km, 7 hours)

Most of this walk follows the old water race. The remains of some gold mines are passed along the way.

5. O'Briens Crossing - East Walk - Cowan Track - O'Briens Road - Short Cut track - O'Briens Crossing (14km, 5 - 5.5 hours)

East Walk follows the Lerderderg River downstream and is rough in places and subject to flood damage. Cowan Track is steep and climbs more than 200 metres from the river to O'Briens Road. Return along O'Briens Road and Short Cut Track to O'Briens Crossing.

Overnight Walk

O'Briens Crossing - Lerderderg River - Mackenzies Flat (20km, 2 or 3 days)

This challenging walk in Lerderderg Gorge is for experienced bushwalkers only. It is best to do the walk when the river is fairly low, as there are many river crossings and at times the river-bed itself is the track. Here you can experience remote, unspoiled bushland.

Be prepared

Although the tracks are generally well defined, many have rough sections so it is advisable to wear strong shoes or boots with a good tread.

Except for very short walks, a spare warm jumper, waterproof jacket, food and drinking water and a good map should always be carried. Walkers do get lost in Lerderderg State Park, so it is recommended that you develop good map reading and navigation skills prior to undertaking longer walks.

A diversity of habitats

The vegetation changes dramatically from north to south in accordance with the rainfall gradient. Dry Stringybark-Box forests near the gorge mouth, and Box-Ironbark woodlands along the high ridges of the south, change to taller, damper Messmate-Peppermint-Gum forests along the northern boundary of the park.

The river bed supports Blue Gums and Manna Gums, while grevilles, wattles and hakeas cover the cliffs.

Late winter and spring are the best times to see the spectacular display of wildflowers.

A haven for wildlife

Koalas live in the Manna Gums. Eastern Grey Kangaroos, Swamp Wallabies and Echidnas are also about during the day. Nocturnal animals include the Greater Glider, Bobuck (or Mountain Brushtail Possum), Bent-wing Bat and Powerful Owl.

There are wonderful bird watching opportunities. Sulphur-crested Cockatoos nest in the gorge and fly out to feed in the open grasslands. They are sometimes prey for the area's most spectacular predator, the Wedge-tailed Eagle, that nests in tall trees in the gullies.

Other birds to be seen are White-naped Honeyeaters, White-throated Treecreepers and Crimson Rosellas. Gang-gang Cockatoos can be located by the noise of cracking gumnuts.



Gang-gang Cockatoo

February 2013

Printed on Australian-made, 100% recycled paper.