



5.2 Park assets and their condition

Indicators

- Number of park assets by asset type
- Condition of visitor assets
- Condition of maritime assets
- Condition of supporting utilities

Context

The provision of safe, clean and appropriately designed park facilities assists park visitors to have an enjoyable park experience. Park facilities, access and utility assets enable visitor to access and enjoy parks as well as enable park management (including emergency) access across the parks network. . Park assets are monitored to ensure they are safe and maintenance is undertaken throughout the year, focusing on key tourism and recreation assets. The aim of park management is to maximize the proportion of assets that are in excellent to average condition.

Number of park assets by asset type

Parks Victoria manages over 28,000 assets including roads, trails, bridges, historic buildings, gardens, accommodation facilities and visitor facilities, including toilets, BBQs and fireplaces, picnic tables, shelters and seating, drinking fountains, rubbish bins, campgrounds, play grounds, viewing lookouts and bird hides.

Figure 5.2.1 Number of park facility assets

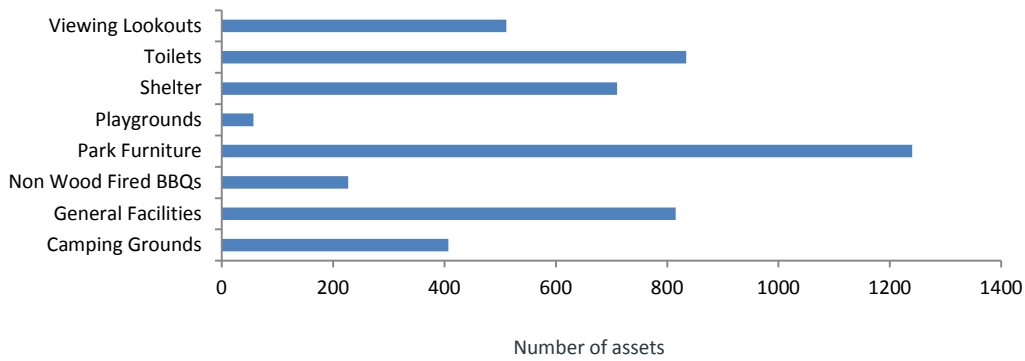


Figure 5.2.2 Number of access-based assets

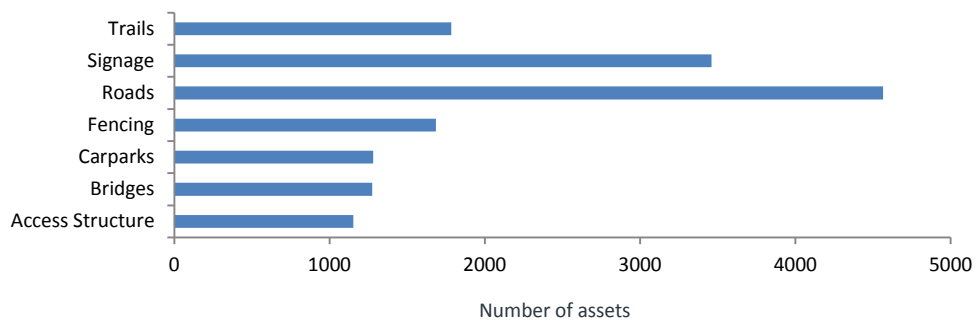


Figure 5.2.3 Number Building and accommodation assets

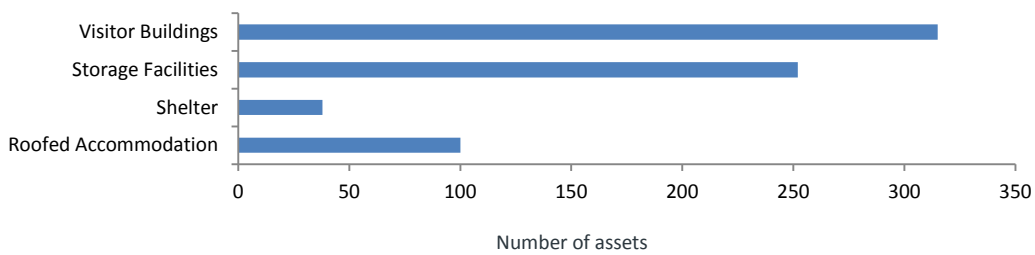


Figure 5.2.4 Number other assets

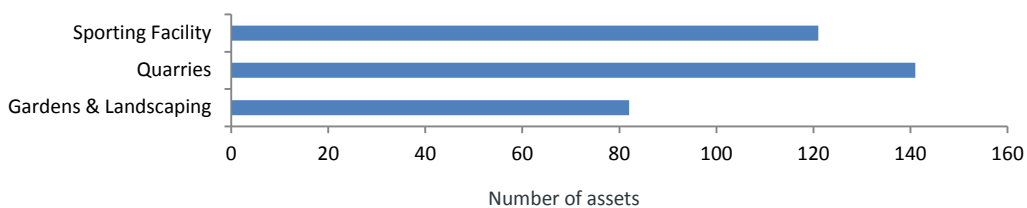


Figure 5.2.5 Number of maritime and waterway assets

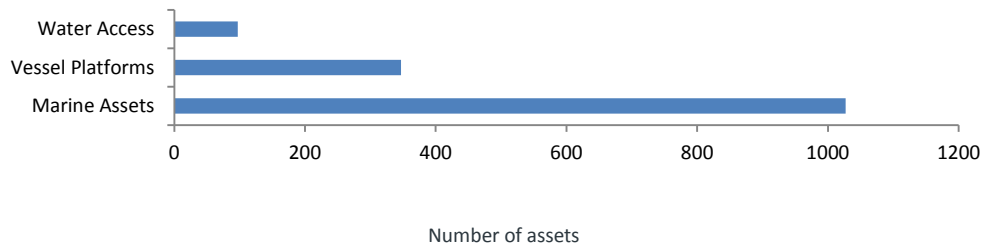
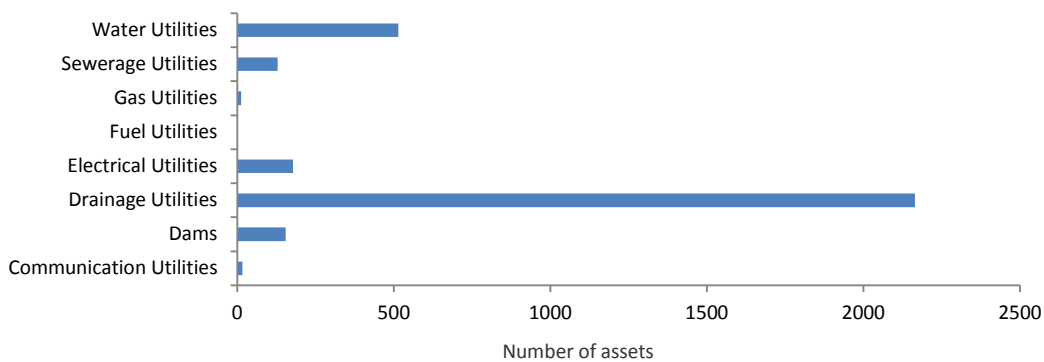


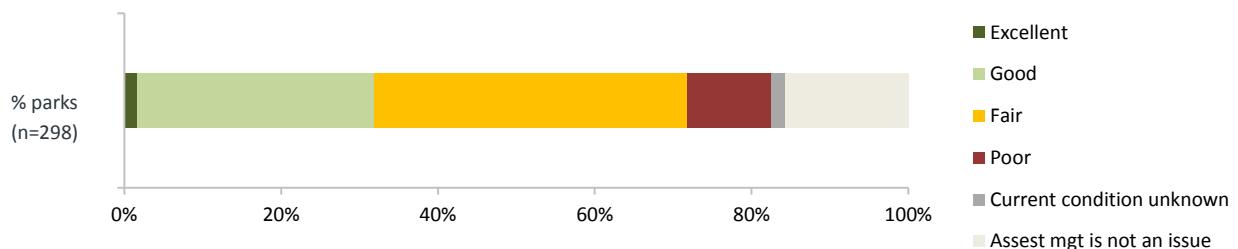
Figure 5.2.6 Number of utility assets



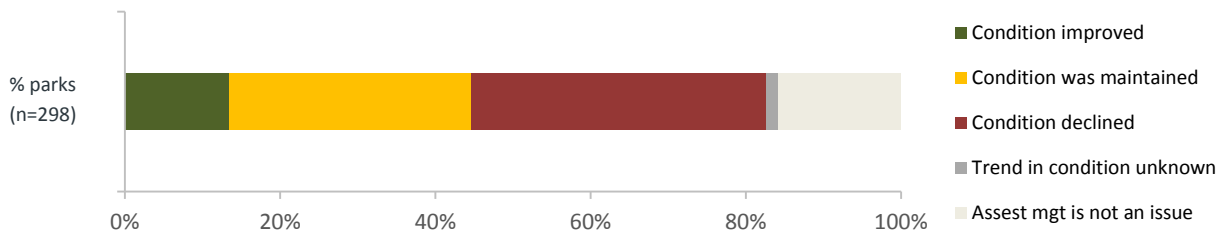
Condition of park assets

Park managers reported that overall asset condition was excellent or good condition in 32% of assessed parks, with 51% reporting that overall asset condition was fair or poor. Slightly more than half of the assessed parks reported that asset condition had improved or was stable with around 45% of parks reporting that asset condition had declined since 2010. Highest priority (LOS A) parks had a lower proportion of assets in poor condition than other parks; however there was little difference in the trend in condition.

Figure 5.2.7 Overall condition of all park assets



5.2.8 Trend in overall condition of park assets



Based on asset condition assessments for specific asset classes

- between 40% and 50% of visitor facilities are in excellent or good condition;
- less than 40% of access trails are in excellent or good condition;
- most visitor buildings (e.g. interpretive centres) are in excellent or good condition;
- between 40 and 50% of utility infrastructure are in excellent or good condition;
- nearly 40% of maritime assets are in poor or very poor condition.

Figure 5.2.9 Condition of visitor assets

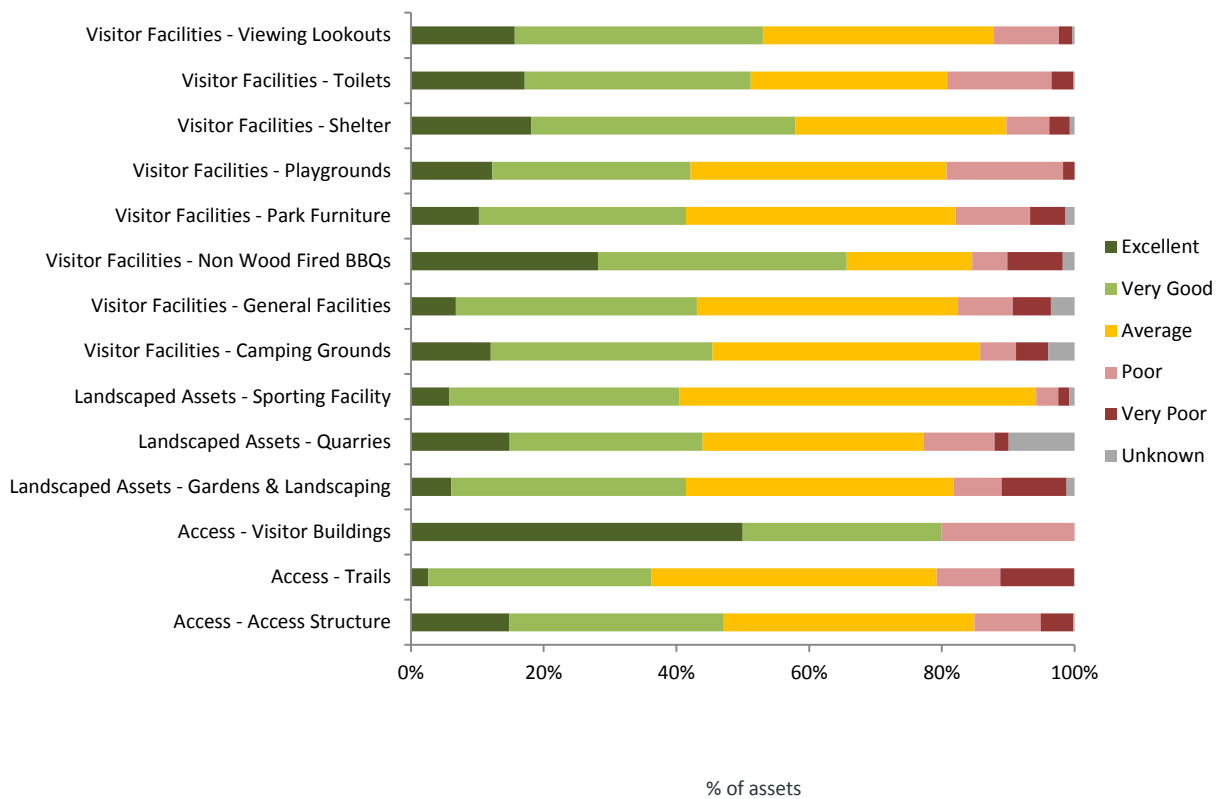


Figure 5.2.10 Condition of buildings and utility infrastructure

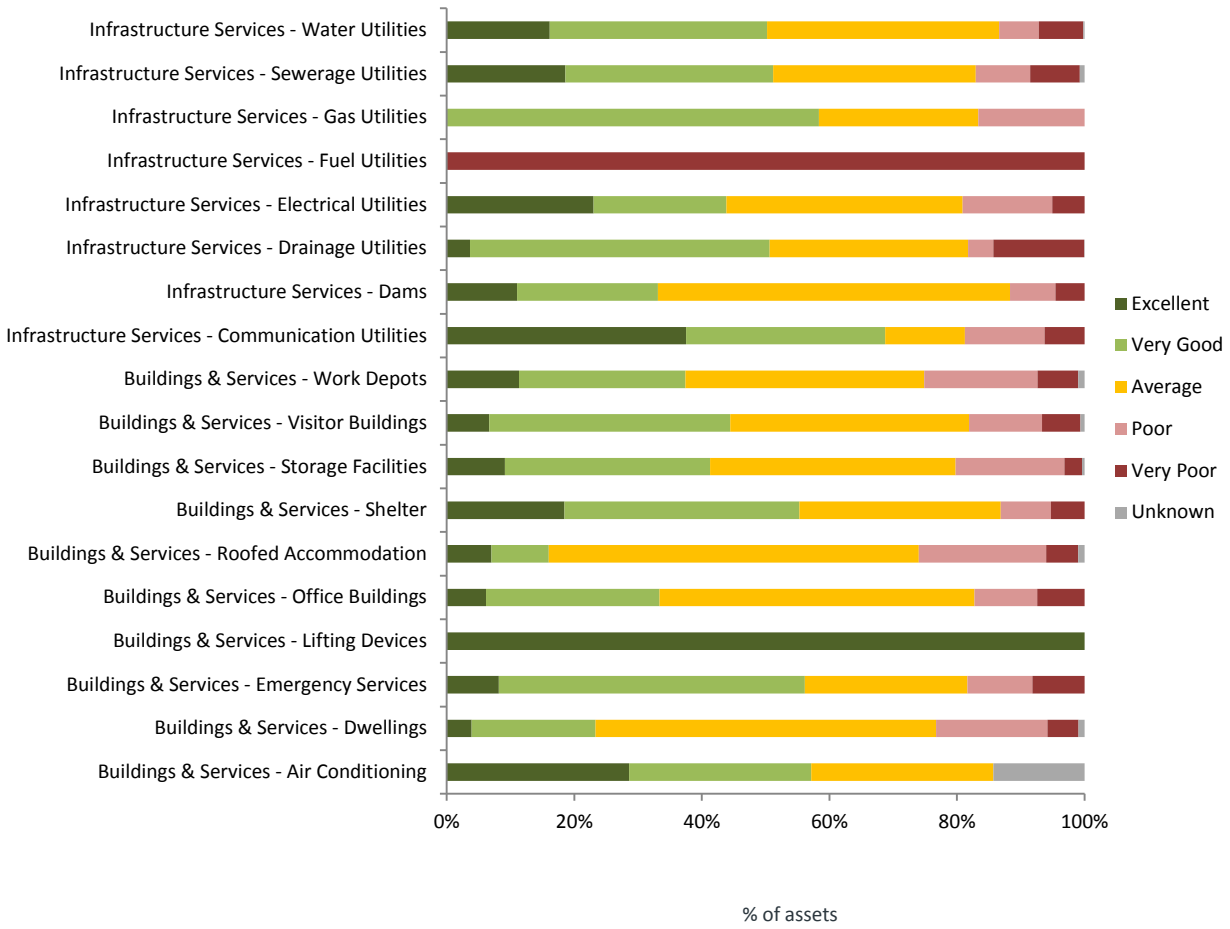


Figure 5.2.11 Condition of maritime assets

