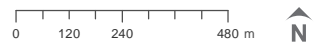


Fire Preparedness 2016/17

3 - Derrimut Grassland N.C.R.

13/09/2016
 Coordinate System: GDA 1994 MGA Zone 55
 Projection: Transverse Mercator
 Datum: GDA 1994

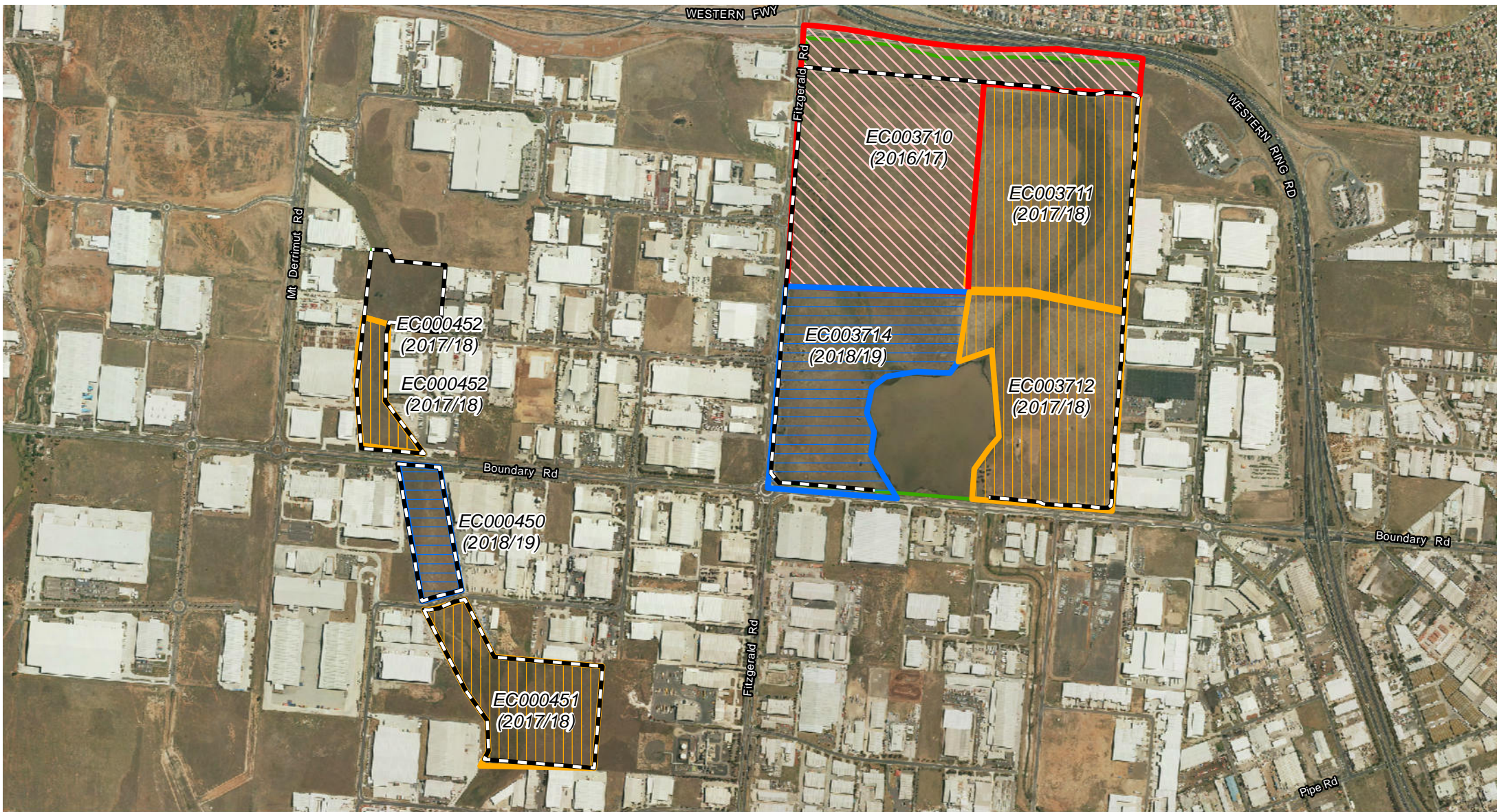


- Annual works
- Planned burns
- Park boundary
- Slashing
- 2016/17
- 2017/18
- 2018/19



Disclaimer: Parks Victoria does not guarantee that this data is without flaw of any kind and therefore disclaims all liability which may arise from you relying on this information.
 Data source acknowledgements: State Digital Mapbase, The State of Victoria and the Department of Environment, Land, Water & Planning.

This map is to be used as a guide only.
 For more detailed information please contact Parks Victoria on 13 1963.
 For specific planned burning information visit www.delwp.vic.gov.au/fire-and-emergencies

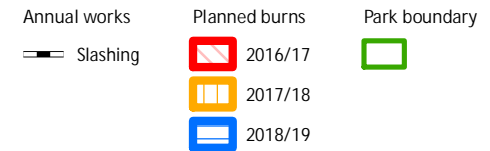
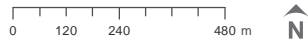


Fire Preparedness 2016/17

3 - Derrimut Grassland N.C.R.

13/09/2016

Coordinate System: GDA 1994 MGA Zone 55
 Projection: Transverse Mercator
 Datum: GDA 1994



Disclaimer: Parks Victoria does not guarantee that this data is without flaw of any kind and therefore disclaims all liability which may arise from you relying on this information.
 Data source acknowledgements: State Digital Mapbase, The State of Victoria and the Department of Environment, Land, Water & Planning.

This map is to be used as a guide only.
 For more detailed information please contact Parks Victoria on 13 1963.
 For specific planned burning information visit www.delwp.vic.gov.au/fire-and-emergencies