

Grampians National Park - UPDATE



Recovery from flood damage

11th May 2012

In January 2011 a significant storm and flood event swept through the Grampians National Park causing damage to roads, walking tracks, campgrounds and popular visitor sites. Parks Victoria have worked hard to open many areas, however conditions may change quickly if there is further weather events.

What's Closed

Road & Track Closures

- Silverband Road (Silverband Falls Carpark to Sundial Road turnoff)
- Glenelg River Road (Boreang Campground to Mt Victory Road)
- Stony Creek Road (Rosea Track to Rosea Carpark)
- Henham Track
- Mitchell Road
- Redmans Track
- Mount William Picnic Ground Road
- Emmetts Road
- Mafeking Road (Open from Jimmy Creek Road to Mafeking Picnic Area)
- Syphon Road (From Glenelg River Road to Sawmill Track)
- Moora Track
- Fields Track
- Rosea Track
- Homestead Track
- Mt Cassel Track
- Sanders Track

Campground & Site Closures

- Bomjinna Campground
- Kalymna Falls Picnic Area
- Golton Gorge Picnic Area
- Zumstein Picnic Area

Walking Track Closures

Wonderland Walks

- Wonderland Loop (Halls Gap to Wonderland Carpark)
- Venus Baths
- Splitters Falls
- Mount Rosea
- Wonderland remote overnight hikes.

Southern Walks

- Bomjinna Track (From Bomjinna Campground to Mt William Carpark)
- Kalymna Falls
- Major Mitchell Plateau
- Teddy Bear Gap
- Fortress
- Mt Thackeray

Northern Walks

- MacKenzie Falls River Walk including Fish Falls (From base of Mackenzie Falls to Zumstein Picnic Area)
- Zumstein Historic Walk
- Golton Gorge Loop
- Tilwinda Falls

Please take care in the open areas of the Grampians National Park

While walking tracks and roads in the Grampians National Park are open, visitors are advised that the maintenance standard may be less than normal or expected. Park staff have taken much care to ensure that risk issues have been minimised, however hazards may still be present and visitors are advised to proceed with caution. Roads may appear in reasonable condition, but many have corrugations, soft edges and are still very wet. Please be cautious around road edges and drive slowly.

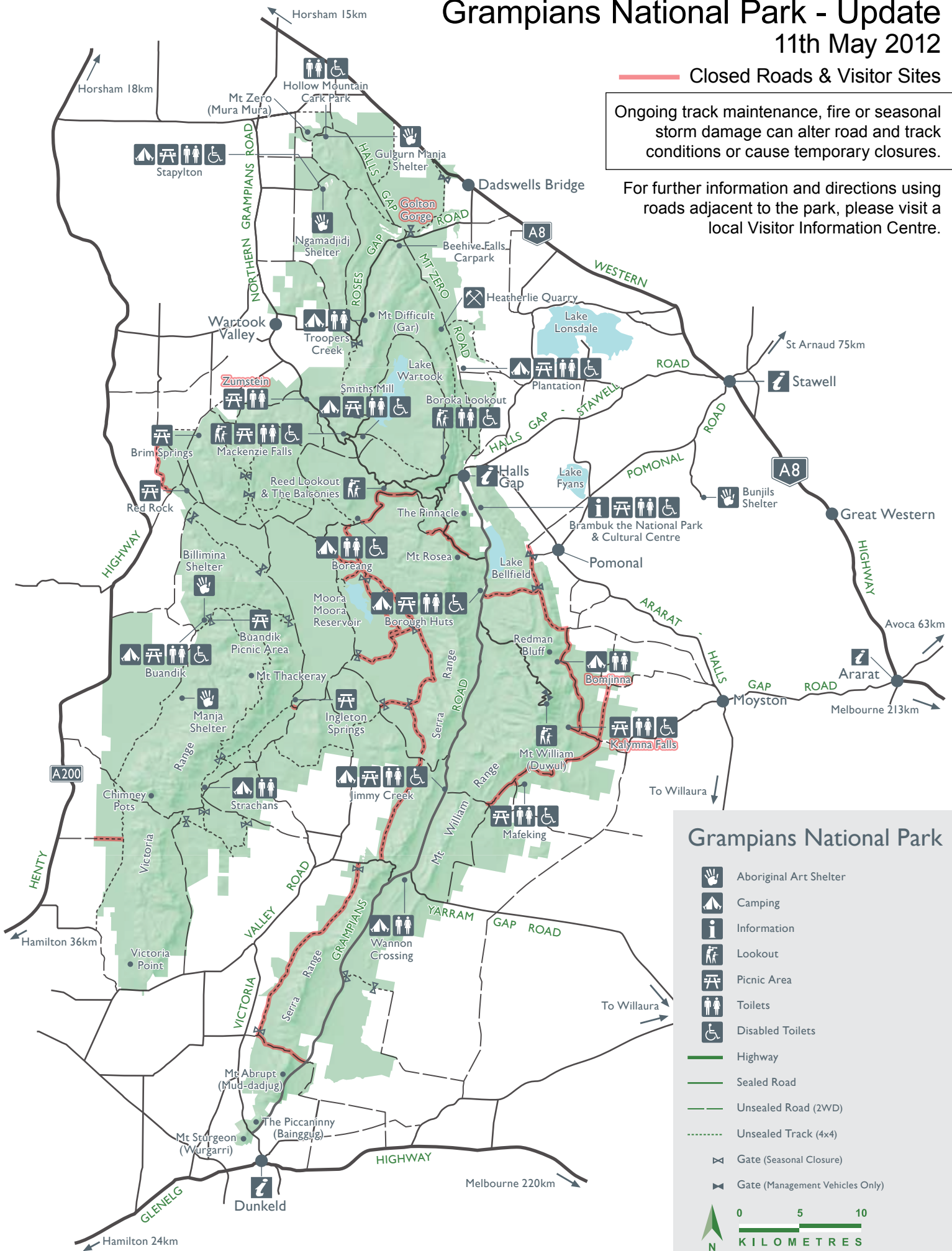
Grampians National Park - Update

11th May 2012

Closed Roads & Visitor Sites

Ongoing track maintenance, fire or seasonal storm damage can alter road and track conditions or cause temporary closures.

For further information and directions using roads adjacent to the park, please visit a local Visitor Information Centre.



Grampians National Park

- Aboriginal Art Shelter
 - Camping
 - Information
 - Lookout
 - Picnic Area
 - Toilets
 - Disabled Toilets
 - Highway
 - Sealed Road
 - Unsealed Road (2WD)
 - Unsealed Track (4x4)
 - Gate (Seasonal Closure)
 - Gate (Management Vehicles Only)
- 0 5 10
KILOMETRES