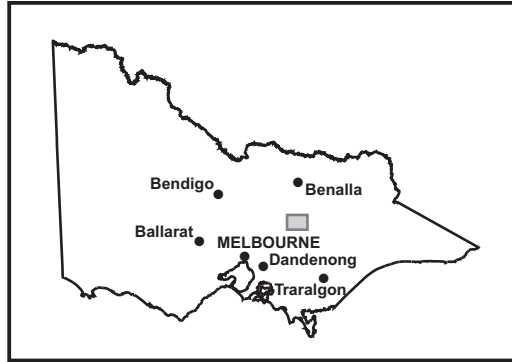


SEASONAL ROAD CLOSURES 2011

MAP 12 - EILDON

For further information contact
Parks Victoria Information Centre 13 1963
DSE Customer Service Centre on 13 6186
 or visit the Parks Victoria website at www.parkweb.vic.gov.au



ROADS CLOSED FROM THE THURSDAY AFTER THE QUEEN'S BIRTHDAY LONG WEEKEND UNTIL THE THURSDAY BEFORE THE MELBOURNE CUP WEEKEND 16/6/2011 TO 27/10/2011

LAKE EILDON NATIONAL PARK

1. Pinnacle Track
2. Webb Track
3. Rhonda Track
4. Steep Track
5. Wombat Track
6. Lake Track (Central)
7. Lake Track (Central)

These roads are closed to protect road surfaces and the environment, and for public safety. Road Closures may be extended beyond the dates shown, depending on weather conditions.

Legend

- Highway
- Sealed road
- Unsealed road
- Vehicle track
- Walking track
- Lake Eildon National Park
- Other Parks & Reserves
- Alpine Resort
- State Forest
- Softwood Plantations
- Water body

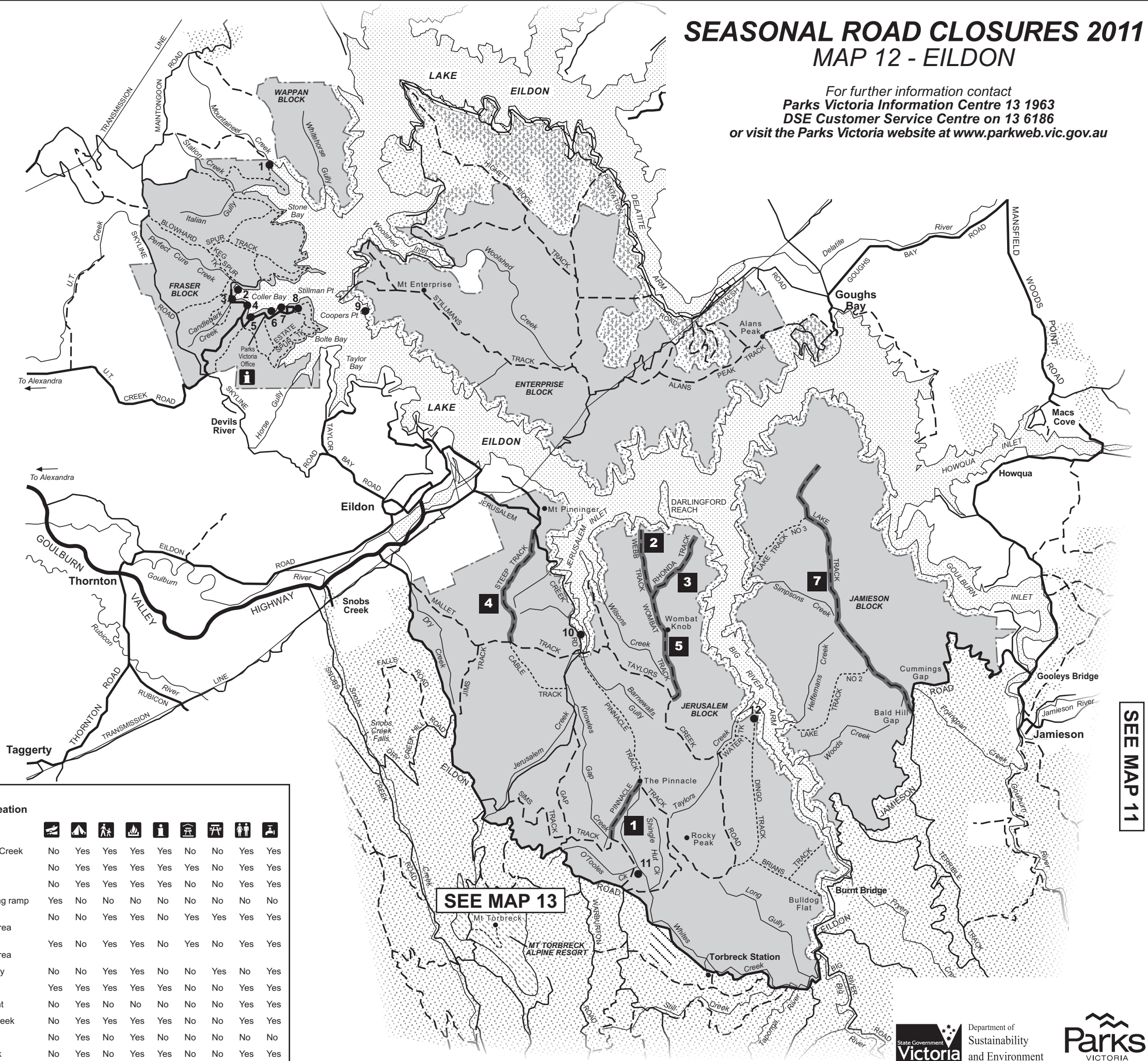
Recreational Facilities

- Boat ramp
- Camping
- Family walk
- Fireplace
- Park information
- Picnic shelter
- Picnic table
- Toilets
- Water

0 1.5 3
 KILOMETRES
 Cartography by Spatial Vision 2001 M/6461

Existing Recreation Facilities

	Boat ramp	Camping	Family walk	Fireplace	Park information	Picnic shelter	Picnic table	Toilets	Water
1 Mountaineer Creek	No	Yes	Yes	Yes	Yes	No	No	Yes	Yes
2 Devil Cove	No	Yes	Yes	Yes	Yes	Yes	No	Yes	Yes
3 Candlebark	No	Yes	Yes	Yes	Yes	No	No	Yes	Yes
4 Boat launching ramp	Yes	No	No	No	No	No	No	No	No
5 Forsyth Flat Day Visitor Area	No	No	Yes	Yes	No	Yes	Yes	Yes	Yes
6 Herb Fitzroy Day Visitor Area	Yes	No	Yes	Yes	No	Yes	No	Yes	Yes
7 Stockyard Bay	No	No	Yes	Yes	No	No	Yes	No	Yes
8 Lakeside	Yes	Yes	Yes	Yes	Yes	No	No	Yes	Yes
9 Coopers Point	No	Yes	No	No	No	No	No	Yes	Yes
10 Jerusalem Creek	No	Yes	Yes	Yes	Yes	No	No	Yes	Yes
11 O'Toole Flat	No	Yes	No	Yes	No	No	No	No	No
12 Taylors Creek	No	Yes	No	Yes	Yes	No	No	Yes	Yes



SEE MAP 11