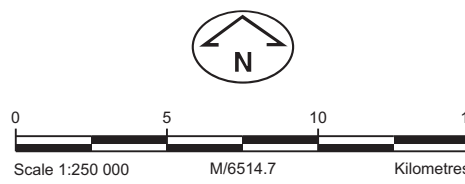


SEASONAL ROAD CLOSURES 2011

MAP 7 - THOMSON / TYERS

For further information contact
Parks Victoria Information Centre 13 1963
DSE Customer Service Centre on 13 6186
 or visit the Parks Victoria website at www.parkweb.vic.gov.au



SEE MAP 11

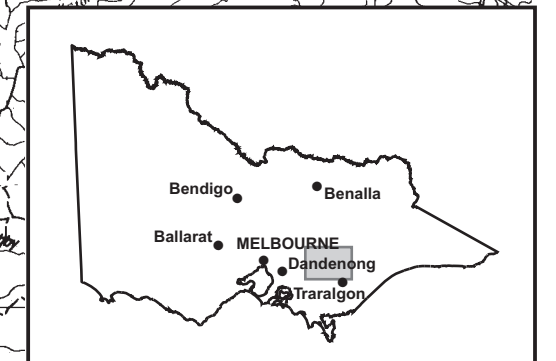
SEE MAP 8

SEE MAP 14

SEE MAP 15

SEE MAP 6

SEE MAP 16



ROADS CLOSED FROM 1/5/2011 TO 31/10/2011
NOOJEE FOREST

- 31. 40 Mile Break (North Loch Road to Toorongo Road and all access to Toorongo Road)
- 56. Boundary Rd (from Montane Rd to Radford Rd)

ROADS CLOSED FROM 1/5/2011 TO 30/11/2011
THOMSON CATCHMENT

- 1. Pills Road - Turner Track
- 2. BB Jordan Divide Track
- 3. Jericho Track
- 4. Victor Spur Track
- 5. Red jacket Track
- 6. Jims Track
- 7. Poole Jordan Divide Track
- 8. Poole Gully Road
- 9. Mt Gregory Track
- 10. Cream Can Hill Track
- 11. T-J Divide Track
- 12. Casper Creek Track
- 13. Violet Town Track
- 14. Park Road
- 15. Sucklings Road
- 16. Trig Point Track
- 18. Upper Thomson Road
- 19. Basalt Hill Track
- 57. Whitelaws Track
- 58. Johnson Hill Track
- 59. Red Jacket Spur Track
- 60. Ross Creek Track
- 61. Ross Creek Link Track

ROADS CLOSED FROM 1/5/2011 TO 31/12/2011
BAW BAW NATIONAL PARK

- 34..Low Saddle Track

ROADS CLOSED FROM THE THURSDAY AFTER THE QUEEN'S BIRTHDAY LONG WEEKEND UNTIL THE THURSDAY BEFORE THE MELBOURNE CUP WEEKEND - 16/6/2011 TO 27/10/2011

THOMSON CATCHMENT

- 35. Ezards Track

TANJIL FOREST

- 36. Buddys Track
- 37. Long Creek Road
- 38. Christmas Creek Road
- 40. Boiler Road
- 41. Eye Road
- 42. Buckpit Road
- 44. Spurwood Road
- 45. Eastern Tyers Extension
- 47. Western Tyers River Road
- 48. Pitman Creek Road
- 49. Buckles Spur Jeep Track
- 50. Palmer Track
- 54. South Face Road

WALHALLA HISTORIC AREA

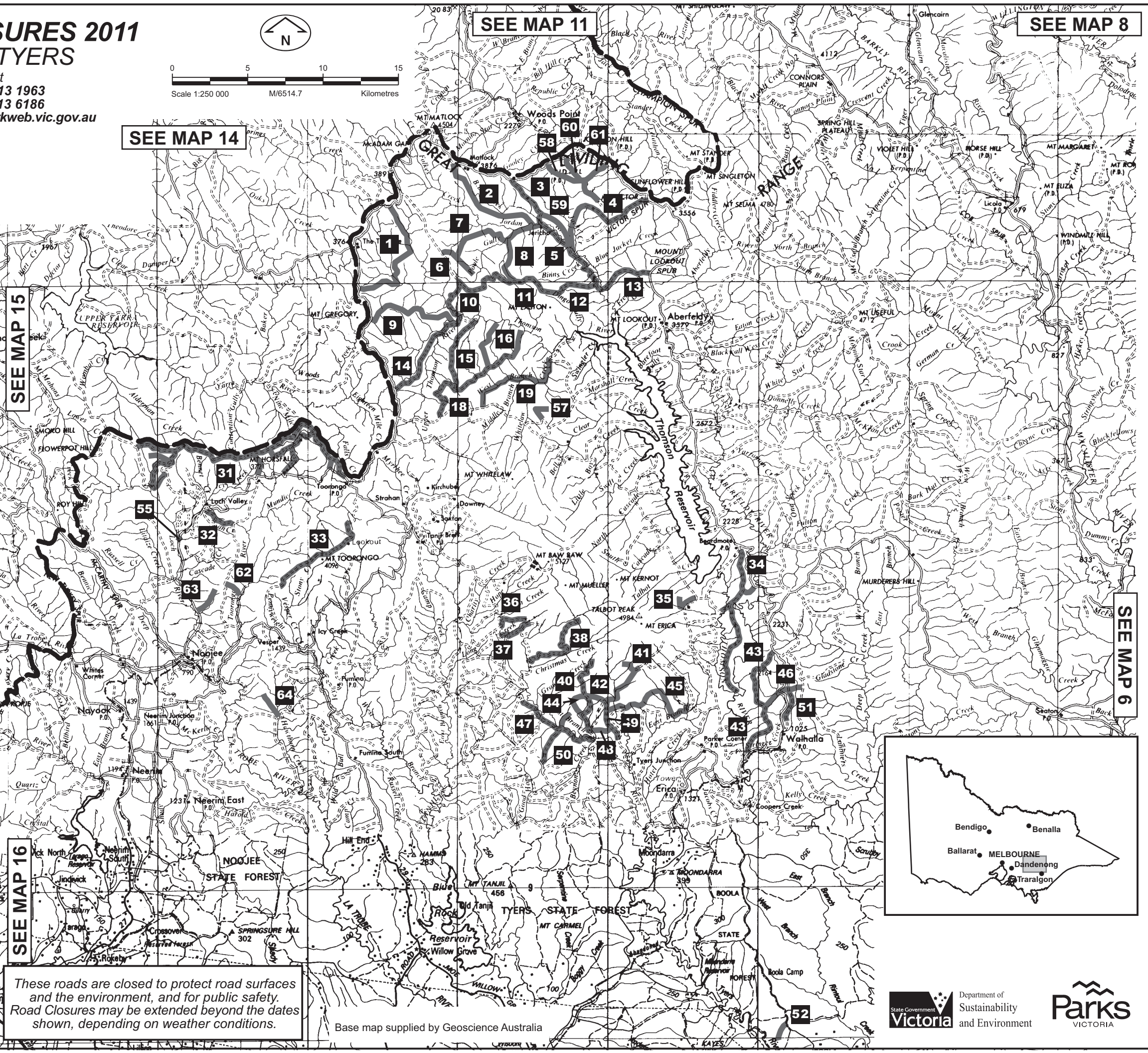
- 43. Mormontown Track
- 46. Britannia Spur Track
- 51. Cricket Ground Track

NOOJEE FOREST

- 32. Teddy Norman Track
- 33. Mt Toorongo Jeep Track
- 55. The Poplars Reserve
- 62. Fawcett Track
- 63. Gleasons Track
- 64. Reference Track

ROADS CLOSED FROM 1/7/2011 TO 15/12/2011
TYERS PARK

- 52. W2 Track



These roads are closed to protect road surfaces and the environment, and for public safety. Road Closures may be extended beyond the dates shown, depending on weather conditions.

Base map supplied by Geoscience Australia