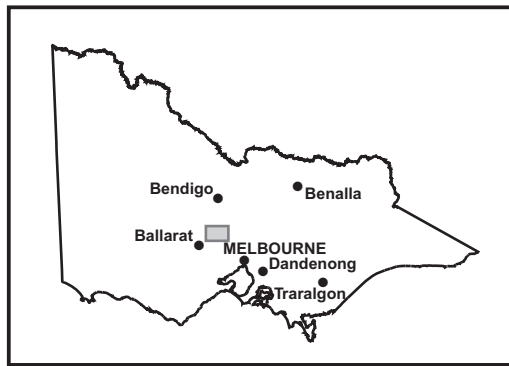


SEASONAL ROAD CLOSURES 2011

MAP 27 - DAYLESFORD

For further information contact
Parks Victoria Information Centre 13 1963
DSE Customer Service Centre on 13 6186
 or visit the Parks Victoria website at www.parkweb.vic.gov.au

ROADS CLOSED FROM THE THURSDAY AFTER THE QUEEN'S BIRTHDAY LONG WEEKEND UNTIL THE THURSDAY BEFORE THE MELBOURNE CUP WEEKEND 16/6/2011 TO 27/10/2011



Wombat State Forest

- Highway
- Major sealed road
- Minor sealed road
- Unsealed road
- Walking track
- Wombat State Forest
- Other State Forest
- Other Parks & Reserves
- Softwood Plantations
- Water body

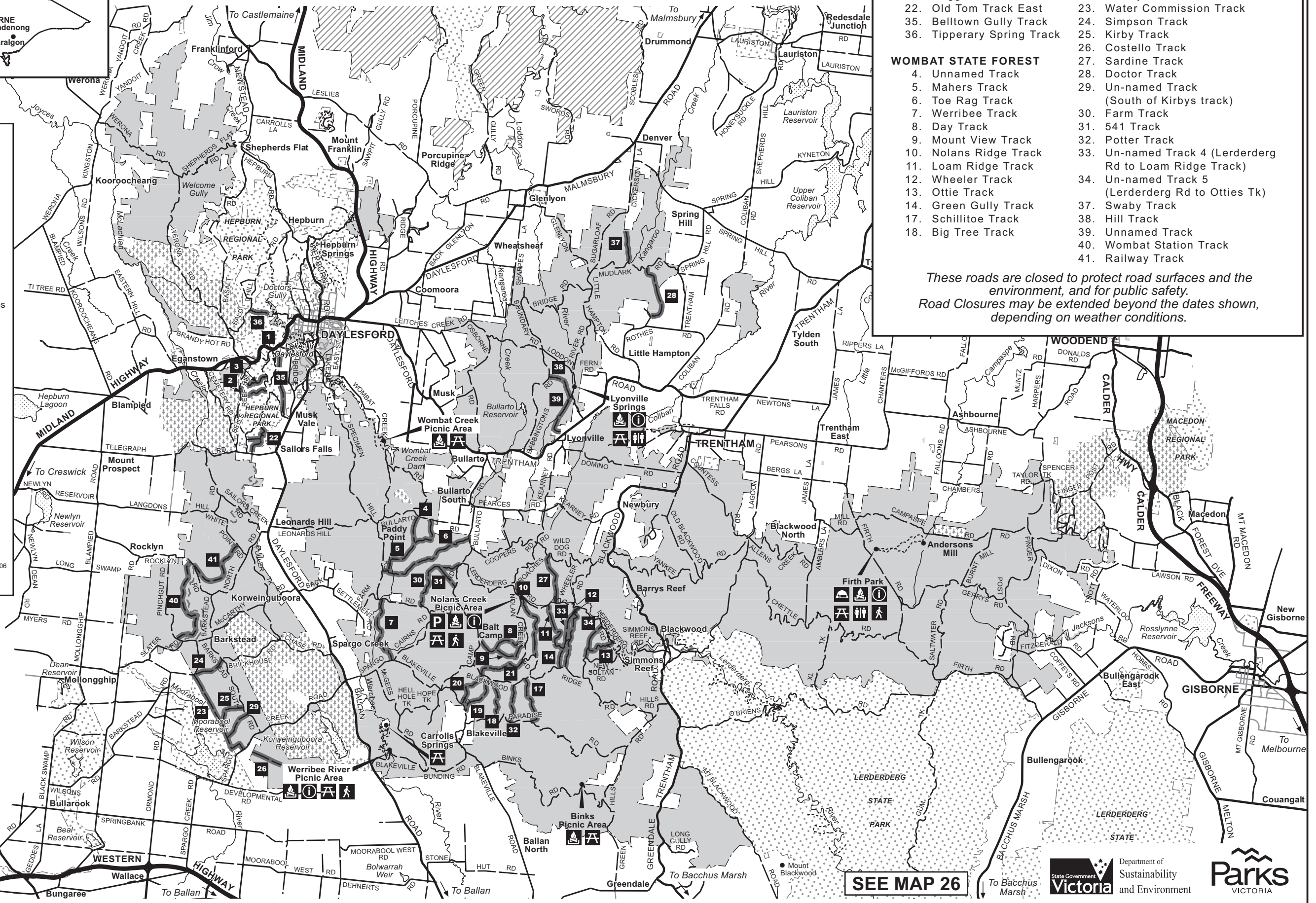
Recreational Facilities

- Camping
- Fireplace
- Information
- Parking
- Picnic table
- Toilets
- Walking

0 4 8
 KILOMETRES
 Cartography by Spatial Vision 2006
 M/8312

- HEPBURN REGIONAL PARK**
- | | |
|----------------------------|----------------------------|
| 1. Sailors Ridge Track | 19. Hodges Track |
| 2. Black Jack Track | 20. Gentle Annie Track |
| 3. Briggs Track | 21. Stockyard Track |
| 22. Old Tom Track East | 23. Water Commission Track |
| 35. Belltown Gully Track | 24. Simpson Track |
| 36. Tipperary Spring Track | 25. Kirby Track |
| | 26. Costello Track |
- WOMBAT STATE FOREST**
- | | |
|------------------------|--|
| 4. Unnamed Track | 28. Doctor Track |
| 5. Mahers Track | 29. Un-named Track (South of Kirbys track) |
| 6. Toe Rag Track | 30. Farm Track |
| 7. Werribee Track | 31. 541 Track |
| 8. Day Track | 32. Potter Track |
| 9. Mount View Track | 33. Un-named Track 4 (Lerderberg Rd to Loam Ridge Track) |
| 10. Nolans Ridge Track | 34. Un-named Track 5 (Lerderberg Rd to Otties Tk) |
| 11. Loam Ridge Track | 37. Swaby Track |
| 12. Wheeler Track | 38. Hill Track |
| 13. Oattie Track | 39. Unnamed Track |
| 14. Green Gully Track | 40. Wombat Station Track |
| 17. Schillitoe Track | 41. Railway Track |
| 18. Big Tree Track | |

These roads are closed to protect road surfaces and the environment, and for public safety. Road Closures may be extended beyond the dates shown, depending on weather conditions.



SEE MAP 26