

# Victorian Notice to Mariners

The following Notice to Mariners is published for general information.

**Melbourne, 4 August 2017**  
**Australia – Victoria**

**No. 207(T)– 2017**

**Local Port of Port Phillip**

**Patterson River**  
**Patterson River Channel– Geotechnical Investigation Work Exclusion Zone – Change of Dates**

**Date:** **Tuesday 1 August 2017 to Monday 14 August 2017.**

**Previous notice:** 202(T) – 2017 is referred and cancelled.

**Details:** Mariners are advised that the completion date of the exclusion zone declared for the purposes of geotechnical investigation works within the Patterson River channel has been updated from Sunday 13 August to Monday 14 August. The works will occur at the same approximate location 38°04.361'S, 145°07.319'E (WGS84).

The exclusion zone will be in three works zone sections to enable continued navigation under the Patterson River bridge. The revised dates are described in the following diagrams. The works zones extend 40 metres upstream and 40 metres downstream of the drilling barge which will be situated on the eastern side of the Patterson River Pedestrian Bridge and marked by temporary lit communication buoys.

Mariners are advised that the movement of vessels within the marked exclusion zone is prohibited between the dates above, other than vessels involved directly in the works and Parks Victoria vessels.

**Mariners are prohibited from entering the exclusion zone during the dates nominated above and are advised to navigate with caution within the vicinity of Patterson River Bridge. Downstream traffic has right of way under the bridge.**

**Relevant Law:** The exclusion zones have been established under section 211(1) (b) of the *Marine Safety Act 2010*. Navigation of vessels in the works area is prohibited, excluding vessels involved directly in the works and Parks Victoria vessels.

**Charts & Publications**

**Affected:** AUS 143.

**Further Notice:** A further Notice will be issued.

**If you require any further information, please contact Parks Victoria on 13 19 63.**

Victor Teoh  
Senior Manager Local Ports and Waterways  
Melbourne Marine and Maritime Region

If you wish to receive Parks Victoria issued Notice to Mariners, please email your details to [noticetomariners@parks.vic.gov.au](mailto:noticetomariners@parks.vic.gov.au). To view Notices, visit [www.parks.vic.gov.au](http://www.parks.vic.gov.au).

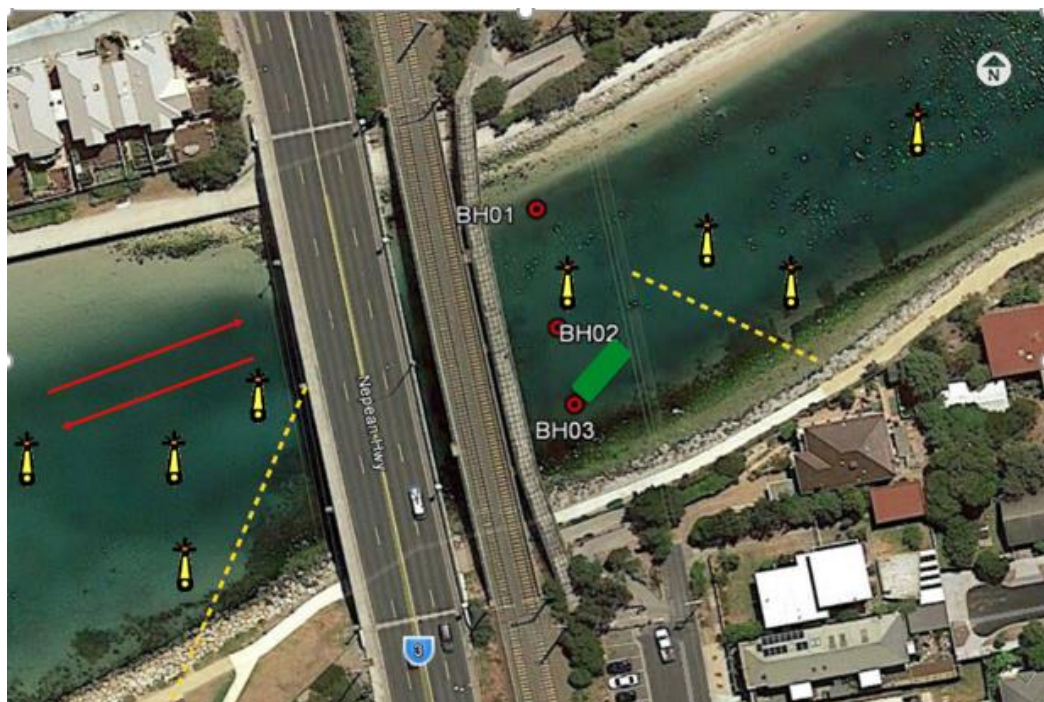
**Works Zone 1. 3 August 2017 to 6 August 2017**

Closure from the north shore to the middle pier as marked. Vessel traffic to utilise the southern bridge arch. Downstream traffic has right of way.



**Works Zone 2. 6 August 2017 to 10 August 2017**

Closure from the south shore to the middle pier as marked. Vessel traffic to utilise the northern bridge arch. Downstream traffic has right of way.



**Works Zone 3. 10 August 2017 to 13 August 2017**

Closure either side of the middle pier as marked. Vessel traffic to pass on north (starboard) side of river going downstream and on the south (port) side of the river going upstream. Downstream traffic has right of way.

