

Heritage Review

Fisherman's Jetty, Mornington

Updated 29 November 2023

Contents

1.0 Introduction	2
2.0 Study Area	2
3.0 Sources of Information	3
4.0 Heritage Listings	4
5.0 History	6
6.0 Description	19
7.0 Previous Heritage Assessments	24
8.0 Policy & legislation	28
9.0 Conclusion	29



1.0 Introduction

This report was prepared for Parks Victoria and provides a heritage review of Mornington Harbour with a primary focus on Fisherman's Jetty. The purpose of this report is to inform the development of a Local Port Area Plan for Mornington Harbour, including options for the future of the site and its heritage assets. The brief for this report called for the following:

- Review the existing cultural heritage values as defined in Victorian Heritage Register, Heritage Inventory listings and heritage overlay;
- Provide a summary history of the development and use of the place;
- Investigate if there are any Heritage studies yet to be implemented, outstanding VHR nominations, confirm that Heritage Victoria is satisfied that the VHIs are mapped correctly, and investigate if any reviews are underway or planned;
- Review and summarise policies in existing reports & surveys;
- Summarise any permit policies and exemptions declared under the Heritage Act; and
- Consult with key heritage groups to build on and synthesise the cultural heritage values associated with the place.

2.0 Study Area

Mornington Harbour is situated within the Mornington Peninsula Shire. It is located on the east coast of Port Phillip Bay, approximately one kilometre north-west of the Mornington township. The study area is limited to that part of the harbour managed by Parks Victoria, with the main item of interest being Fisherman's Jetty.



Figure 1 Aerial photograph of Mornington Harbour.

3.0 Sources of Information

This report was informed by a site inspection and a review of the following documents and historical sources:

Primary Sources

- Argus*
- Illustrated Australian News.*
- Victorian Government Gazette*
- Report on the projected harbour and jetty at Snapper Point, Mount Eliza, Parliamentary Paper, 1856*
- State Library of Victoria picture collection (online)
- Museum Victoria picture collection (online)
- Historical photographs held by the Mornington & District Historical Society
- Public Records Office of Victoria
- Historical aerial photographs (sourced from Landata)
- Victorian Historical Magazine, Vol. December 1932, No.4*
- Public Works Department (Ports and Harbors [sic] Division) Drawing Register* [held by Parks Victoria].

Secondary Sources

- Victorian Heritage Database
- National Trust of Australia (Victoria) Heritage Register Online
- Mornington Peninsula Planning Scheme* [Heritage Overlay (Clause 43.01) and Heritage (Clause 15.03)]
- Mornington Peninsula Heritage Review Area 1 - Mount Eliza, Mornington, Mount Martha Background Report* (Mornington Peninsula Shire Council, Context Pty Ltd, Heritage Intelligence Pty Ltd, Built Heritage Pty Ltd, December 2013)
- Mornington Peninsula Shire Thematic History* (Graeme Butler & Associates, edited by Context Pty Ltd, July 2013)
- Mornington Safe Harbour Planning Report* (Sinclair Knight Merz, Final Report April 2009, Revised March 2010)
- Mornington Safe Harbour Appendix B: Cultural Heritage Assessment* (Sinclair Knight Merz/Renee Gardiner, Final Report 15 April 2009)
- Jetties and Piers: A Background History of Maritime Infrastructure in Victoria* (Jill Barnard, published by the Heritage Council of Victoria, 2008)
- Heritage Information: Pier and Jetties of Port Phillip* (Robin Crocker & Associates, 2004)
- Shire of Mornington Heritage Study* (Graeme Butler & Associates, 1994)
- The Early History of the Mornington Peninsula* (Hunter Rogers, 1960)
- Sailing at Mornington: A History of the Mornington Yacht Club From 1946 to 2016* (Stuart Gooley, 2016)
- Mornington in the Wake of Flinders: Historical Survey* (Leslie Moorhead, 1971)

4.0 Heritage Listings

Victorian Heritage Register

No part of Mornington Harbour or its immediate environs are included in the Victorian Heritage Register. Mornington Pier was nominated for entry in the Register c2003. The Executive Director of Heritage Victoria recommended against registration on the basis that the Pier was of local significance. Fisherman's Jetty is not mentioned in the Executive Director's determination, and it is not clear if it was included in the nomination.

Victorian Heritage Inventory

Mornington Pier is listed on the Victorian Heritage Inventory (Place ID 34585, HI Number H7921-0110). The Inventory listing encompasses Fisherman's Jetty, the harbour between the Pier and Mornington Yacht and the original bluestone breakwater (refer Figure 2). The former site of the Mornington Sea Baths is also listed on the Inventory (Place ID 34589, HI Number H7921-0111). This listing covers a large part of the foreshore south of Mornington Harbour, part of the Yacht Club and its slipway, and the boat ramp (refer Figure 2).

The Heritage Inventory is a listing of all known historical (non-Indigenous) archaeological sites in Victoria. Consent will be required to disturb the sites. In addition, all historical archaeological sites and remains which are older than seventy five years, including those not yet identified or included in the Victorian Heritage Inventory, are protected in Victoria under the *Heritage Act 2017*. No person can knowingly excavate or disturb an archaeological site without obtaining a consent from the Executive Director of Heritage Victoria.



Figure 2 Aerial photograph showing the extent of Heritage Inventory listings for Mornington Pier and Mornington Baths shaded blue. Source: Mapshare.

Mornington Peninsula Shire

Mornington Pier is listed on the Schedule to the Heritage Overlay as HO228. The heritage overlay curtilage is generally aligned with the pier and includes its (long demolished) 'north arm' and part of pier carpark. Fisherman's Jetty is excluded from HO228.

Mornington Public Park and the Schnapper Point Exploration site are also subject to heritage overlay controls (HO55, and HO57 respectively). External paint controls and tree controls apply under HO55 and HO228



Figure 3 Heritage photograph showing the heritage overlays applied to Mornington Pier (HO228) and Mornington Public Park (HO55). Note Fisherman's Jetty is excluded from the HO. Source: Mapshare.

National Trust of Australia (Victoria)

The National Trust of Australia (Victoria) have a file on Mornington Pier, but it is not a classified place (File No. B4578). The file holds copies of reports prepared by other parties – ie there is no commentary from the Trust specific to the significance of the pier.

5.0 History

When the first European pastoralists settled the area in the late 1830s, Mornington was known as Schnapper (or Snapper) Point. The locale was named by one of the earliest settlers A B Balcombe for a small boat that occasionally visited Port Phillip, or possibly for the fish that abounded in the nearby waters.¹ The point formed part of a sheltered natural bay on the east side of Port Phillip, recognised in an early plan of the area with the note '*good shelter and anchorage for ships*' (Figure 4).

Writing in 1932, Peninsula historian Gerald Byrne credited fishing as the driving factor for the establishment of a settlement at this location, as it was for most of the coastal towns on the Mornington Peninsula.² The township area was surveyed in August and September of 1854 and land sales held soon thereafter. The farmlet sized lots were taken up by both speculators as well as storekeepers, dealers, publicans and farmers who made the new town their home.

As the population increased, the settlers began petitioning for the construction of a jetty to facilitate the transport of goods to and from Melbourne, given the rudimentary state of overland transport. A Ports and Harbours Commission was appointed in 1854 to examine the state of ports in the colony, and the Commission met with representatives of the citizens of Schnapper Point on 4 March 1856.³ A survey of the harbour was also being undertaken at this time, with the resulting report to Parliament identifying the need for '*affording early relief to the inhabitants by providing an outlet for their produce*'.⁴

A year later in March 1857 another meeting was held by the Schnapper Point inhabitants, finding that '*the steam communication being now established between this place and Melbourne, a jetty becomes absolutely necessary to prevent the place from retrograding from the want of proper accommodation*'.⁵ A deputation was formed to go by steamer to Melbourne to directly petition for a pier, and was successful. A tender was published in the Victorian Government Gazette in September 1857 for the construction of a stone pier with timber platform.⁶ The lowest tender was for £1667 by Mr Jenkin Collier, and he was also commissioned the next year to construct an extension to the pier for a further £1962.⁷

With a sea link established, the local produce of fish, firewood, railway sleepers, freestone for building and wool were able to be transported from Schnapper Point, with the steamers returning with the necessary stores for ongoing development of the town.

¹ Hunter Rogers, *The Early History of the Mornington Peninsula*, p.25

² Gerald Byrne, 'Early Days of the Mornington Peninsula', *Victorian Historical Magazine*, Vol. December 1932, No.4

³ Leslie Moorhead, *Mornington in the Wake of Flinders: historical survey*, 1971.

⁴ *Report on the projected harbour and jetty at Snapper Point, Mount Eliza*, Parliamentary Paper, 1856.

⁵ *Argus* (Melbourne, Vic. : 1848 - 1957), 2 April 1857, p. 6.

⁶ *Victorian Government Gazette*, 29 September 1857, p. 1830.

⁷ *Victorian Government Gazette*, 3 November 1857 & 9 March 1858, p. 470.

In addition to this trade, the construction of the pier soon opened the possibility of the place to be promoted as a seaside resort. The *News Letter of Australasia* described Schnapper Point as '*present[ing] to the holiday-seeker, from Melbourne, a delightful retreat from the bustle and toil of every-day life. Approaching the Point by steamer, you enter a small bay, from which the scenery of the surrounding shores presents a charming and varied picture...*'⁸

Soon a number of vessels plied the sea route to Mornington, as the place was officially named from 1864. By 1865 steamers travelled between Melbourne and the pier at Schnapper Point twice a week.⁹ Four hotels catered to the day trippers that arrived on the steamers, with the public park that was gazetted in 1863 to the south of the pier providing picnicking and other recreation opportunities. From 1879 the Royal Public Baths provided a sea bathing enclosure on Mothers Beach.

An early engraving depicts a paddle steamer berthed at the pier, along with a number of smaller rigged vessels, presumably fishing boats (Figure 5). When the steamers would arrive, the passengers would disembark before walking up the promenade, formalised in 1885¹⁰, to Main Street (Figure 6).

Fishing continued to be an important industry in the town into the latter part of the nineteenth century. In 1892, there were about 12 to 15 fishing boats based in Mornington, employing about 20 men. On average, 200 baskets of fish weighing 35lb each were caught each week.¹¹ With berths at the pier taken up by the large steamers, a smaller timber fisherman's jetty was constructed on the stone embankment to the south of the pier around 1885. The jetty was used by commercial fishermen as well as being promoted as a tourist attraction for amateurs.¹²

Recreational sailing was another activity that utilised the harbour facilities. The first recorded regatta took place in November 1858, with fast boats from Hobson's Bay visiting Mornington and racing against the local fishing boats. In later decades, regattas would be regularly held at Easter time. This was a major event in the town with a carnival-like atmosphere and various entertainments for visitors including dinghy races and a duck hunt.¹³

A series of historical plans and images show the evolution of the place over time. In terms of the jetty, it is known that repairs were undertaken in 1938 and that it was extended c1955. Land to the south-west of the jetty was reclaimed in 1962 and the Mornington Yacht Club clubhouse building and boat harbour constructed in 1965.¹⁴

⁸ <http://handle.slv.vic.gov.au/10381/259121>

⁹ *Mornington Peninsula Thematic Environmental History*, p. 71

¹⁰ *Victorian Government Gazette*, 23 October 1885, p. 2927

¹¹ *Mornington Peninsula Thematic Environmental History*, p. 56.

¹² *Mornington Peninsula Thematic Environmental History*, p.57

¹³ Stuart Gooley, *Sailing at Mornington: A History of the Mornington Yacht Club*, p.8

¹⁴ Stuart Gooley, *Sailing at Mornington: A History of the Mornington Yacht Club*, p.8

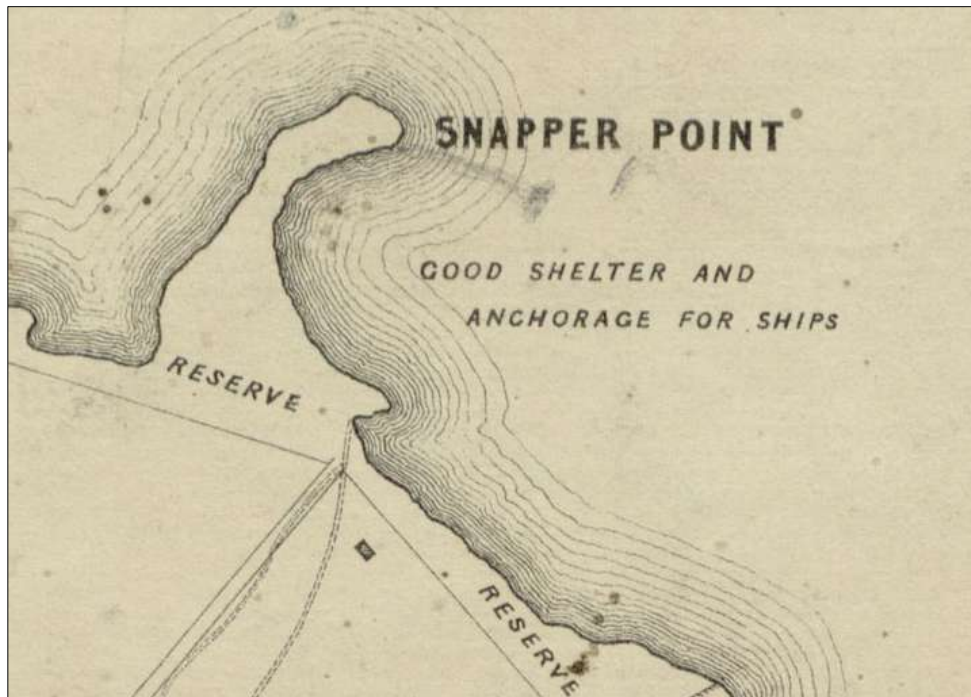


Figure 4 1854 map of Snapper (Schnapper) Point.
Source: State Library of Victoria.

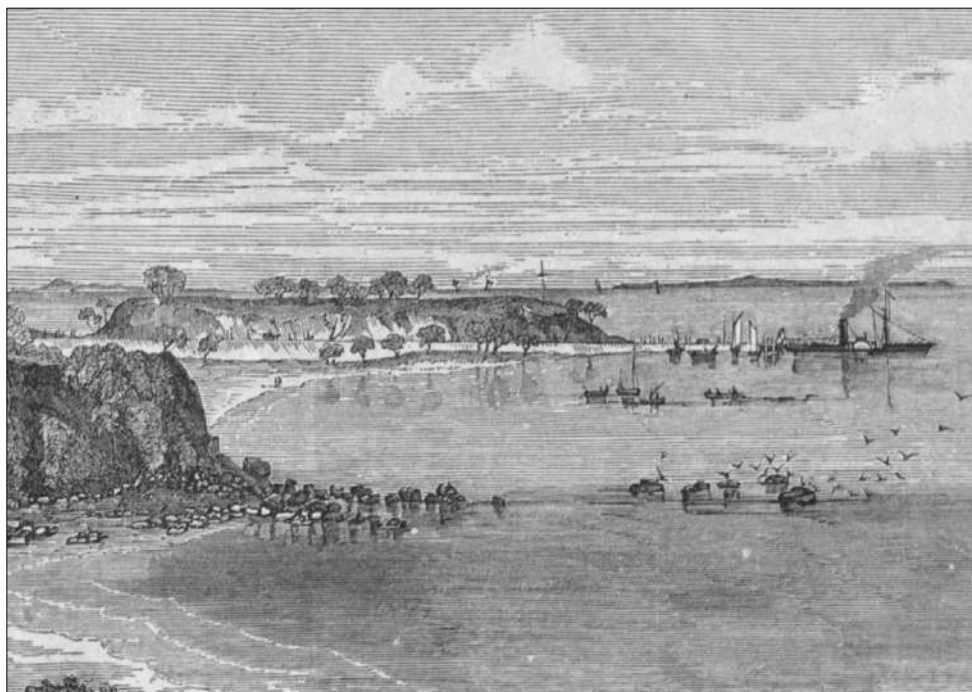


Figure 5 Engraving from the News Letter of Australasia, 1858.
Source: State Library of Victoria.



Figure 6 c.1880 photograph of the pier. Note that Fisherman's Jetty had not yet been constructed.
Source: Mornington & District Historical Society.

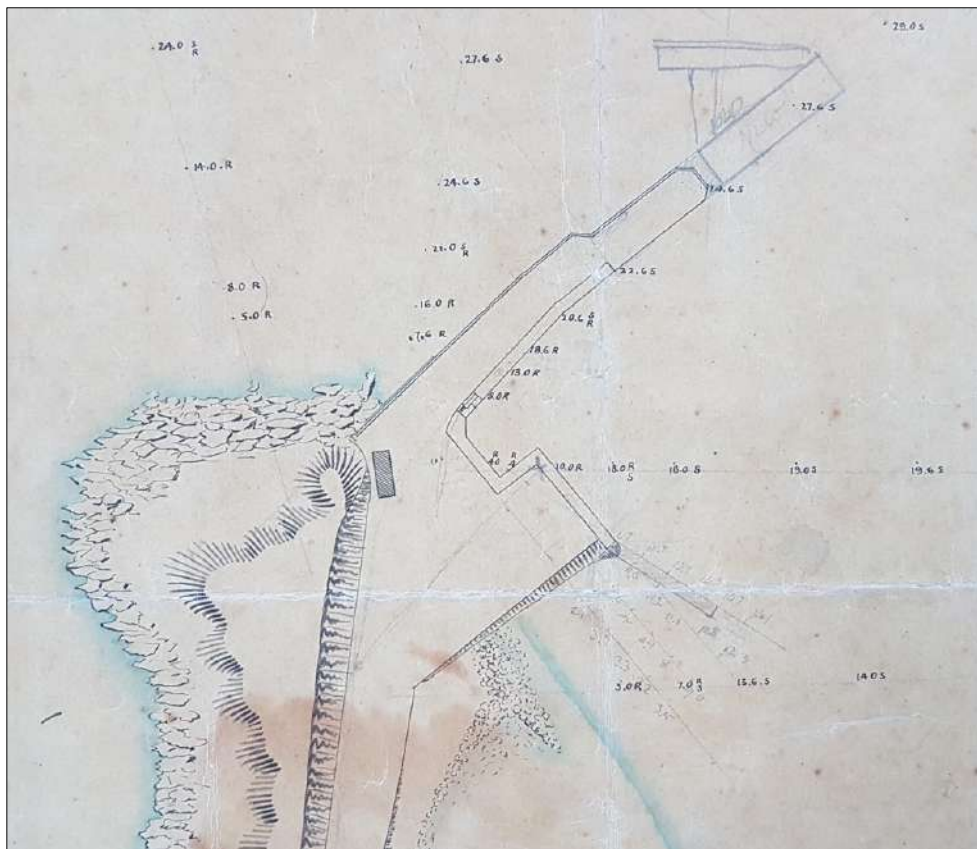


Figure 7 Plan of Mornington Pier, possibly 1883, with later additions shown in pencil.
Source: Public Records Office of Victoria.



Figure 8 The steamer Edina at Mornington Pier, 1886. Fisherman's Jetty is partially visible at right of image. Source: Mornington & District Historical Society.

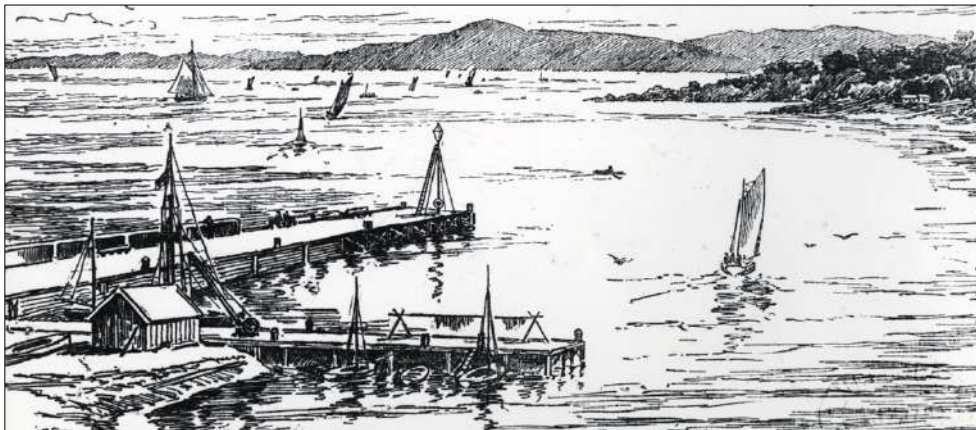


Figure 9 An 1892 illustration of Mornington Pier with Fisherman's Jetty in the foreground. Source: Mornington & District Historical Society.



Figure 10 Regatta scene in the early 1900s. Note Fisherman's Jetty in the right foreground. Source: Mornington & District Historical Society.

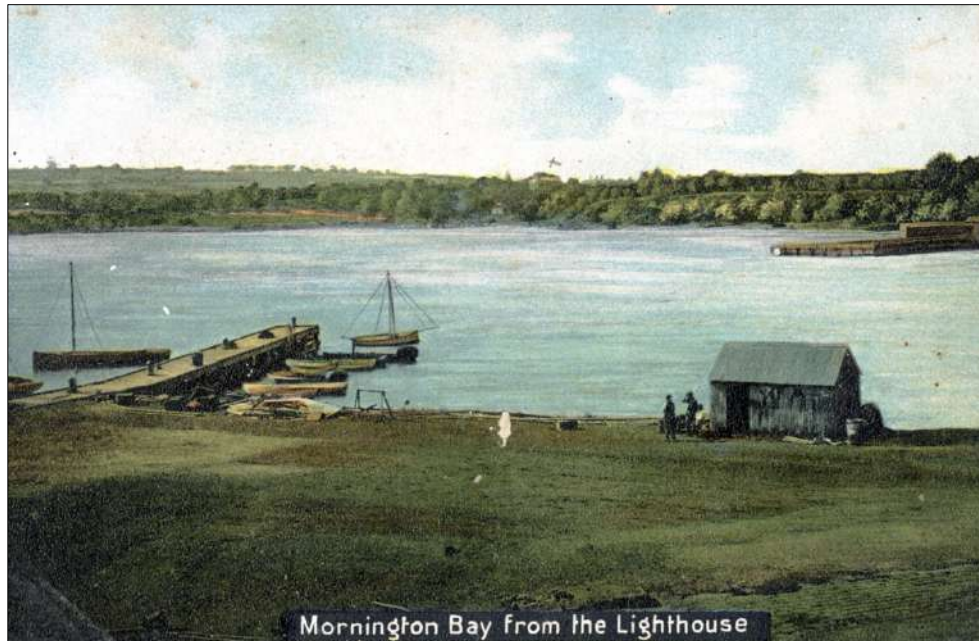


Figure 11 *Fisherman's Jetty, early 1900s.*
Source: Mornington & District Historical Society.



Figure 12 *The Hygeia at berth, c.1920, with Fisherman's Jetty in the foreground.*
Source: State Library of Victoria.



Figure 13 View of the north side of Fisherman's Jetty, 1930.
Source: Museums Victoria.

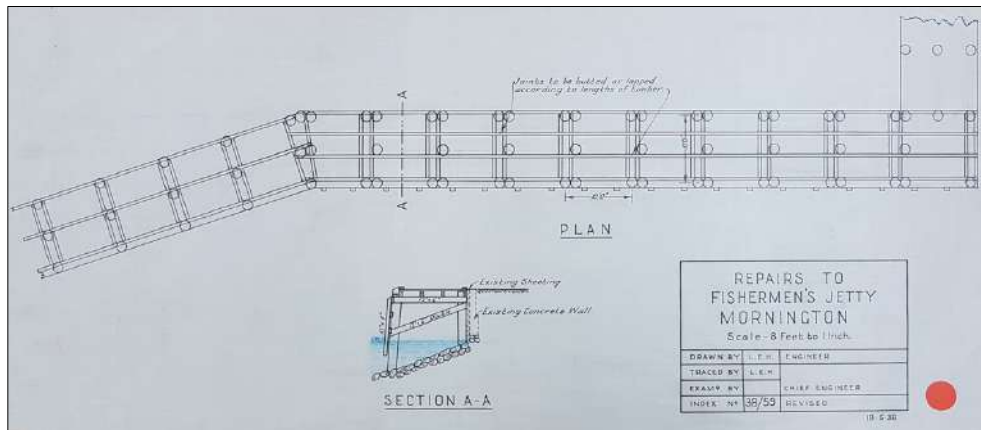


Figure 14 1938 drawing for repairs to Fisherman's Jetty.
Source: Public Records Office of Victoria.



Figure 15 View of Fisherman's Jetty, c1940.
Source: State Library of Victoria



Figure 16 Aerial image of the harbour area, 1949. The sea baths are visible below the harbour
Source: www.landata.vic.gov.au

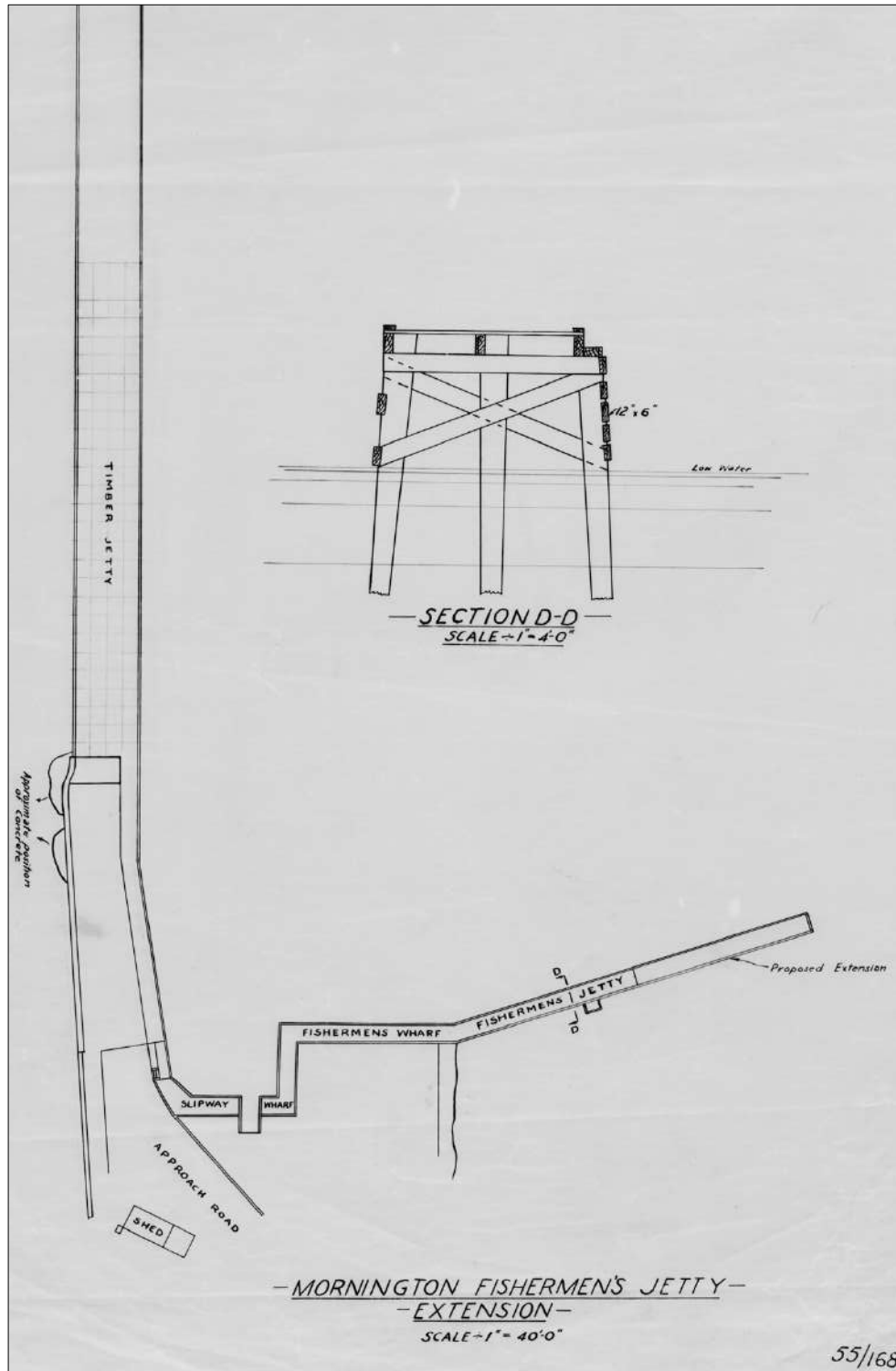


Figure 17 1955 drawing for an extension to Fishermen's Jetty .
Source: Parks Victoria



Figure 18 Aerial image of the harbour area, 1957. Note that Fisherman's Jetty had been extended by this time.
Source: www.landata.vic.gov.au



Figure 19 Land reclamation underway south-west of Fisherman's Jetty, 1960s
Source: Mornington & District Historical Society.



Figure 20 Aerial image, 1963. Note the land reclamation underway.
Source: www.landata.vic.gov.au



Figure 21 Aerial image, 1975. The Yacht Club clubhouse had been constructed by this time.
Source: www.landata.vic.gov.au

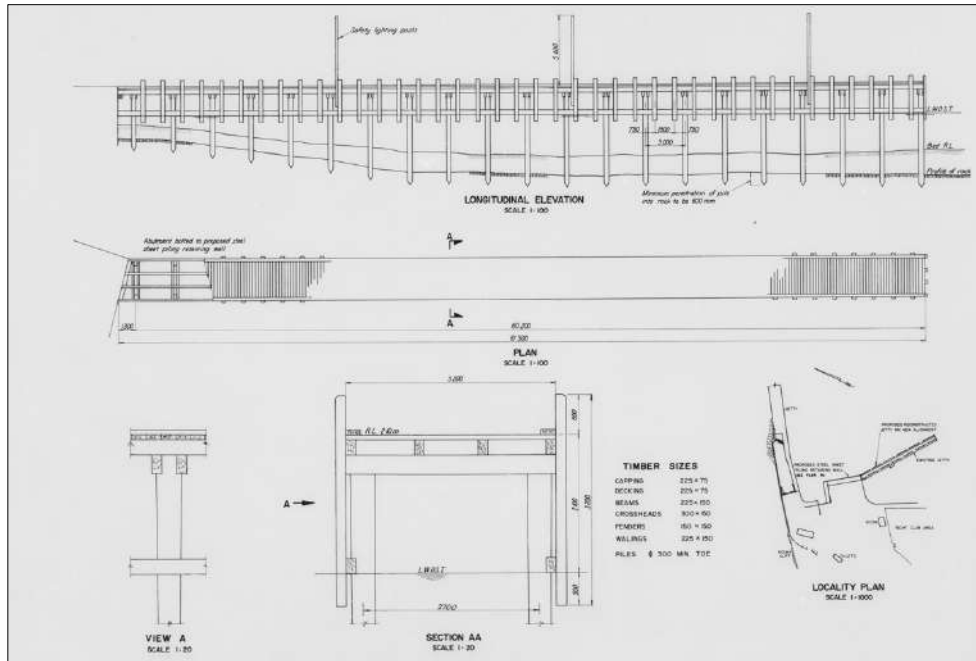


Figure 22 A 1977 Public Works Department drawing for the reconstruction of Fishermen's Jetty.
Source: Parks Victoria

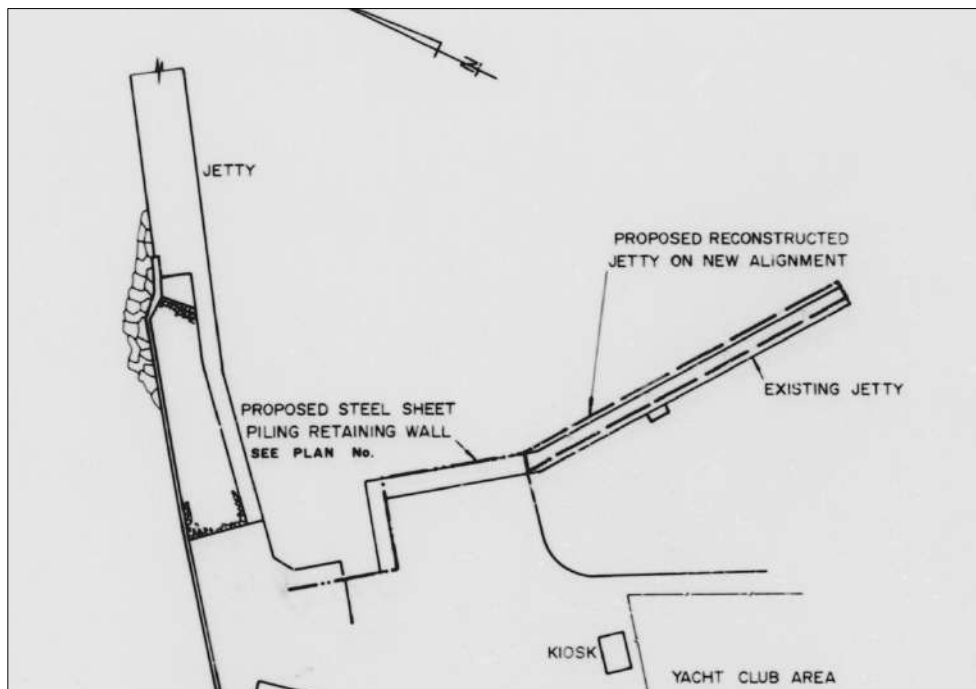


Figure 23 Extract from the 1977 drawing showing Fisherman's Jetty reconstructed on a new alignment. Source: Parks Victoria

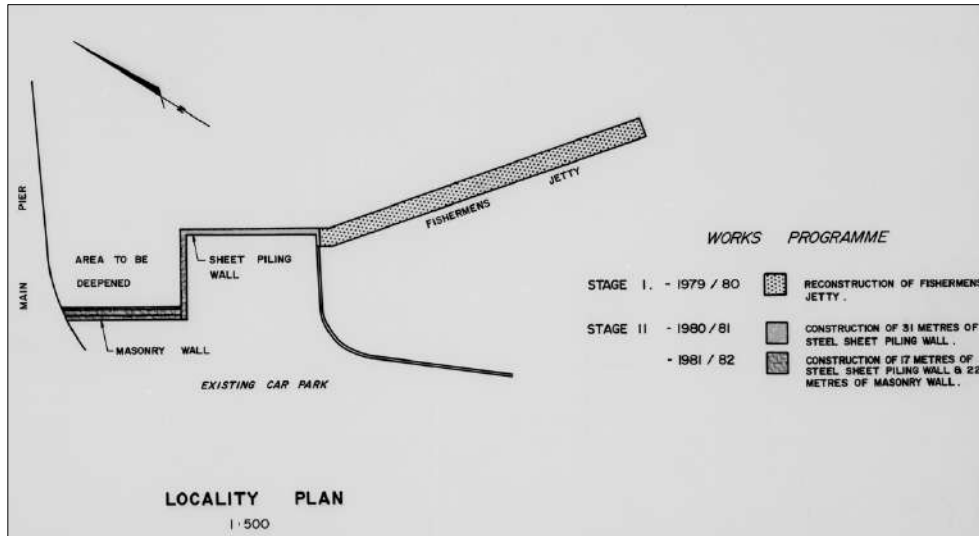


Figure 24 A 1979 Public Works Department drawing indicating that the reconstruction of Fisherman's Jetty occurred c1979-80.
Source: Parks Victoria



Figure 25 Aerial view of Mornington Harbour, 1988.
Source: 'Sailing in Mornington: A History of the Mornington Yacht Club'

6.0 Description

Mornington Harbour encompasses Mornington Pier, Fisherman's Jetty, swing moorings, the Mornington Yacht Club and car and trailer parking areas. Mornington Yacht Club occupies a 5745 square metre lease area with a double-storey clubhouse/restaurant, a fenced boat storage area and slipway. A two-lane public boat launch ramp with finger jetties either side is located to the south of the Yacht Club slipway. The harbour and adjacent beaches are used for a variety of water-based recreational activities such as boating, fishing, swimming and social gatherings.

Mornington Pier extends north-east from the end of Schnapper Point. The original portion was constructed during the 1850s, with extensions added during the 1870s and the early twentieth century. A jetty to the north of the pier (forming an 'L shape') was also added and later demolished. A major reconstruction of the pier was completed in 2015, involving demolition of the outer section, installation of over 100 new piles supporting a 75 metre long reinforced concrete platform with a timber deck. A new low-landing was erected on inner/south side of the pier and concrete wave screens were installed along the north side to provide increased protection for berthed and moored boats in the harbour. Handrails, seating and lighting were also replaced at this time.

Fisherman's Jetty extends into the harbour in a south easterly direction in front of the Yacht Club. It is approximately 62 metres in length and 3 metres wide, and is constructed in a 'traditional' method using untreated timber components comprising round piles, paired crossheads (each side of the piles), beams, decking and kerbs. The jetty was originally built c1885 and almost doubled in length c1955.¹⁵ Plans for the full reconstruction of the jetty were prepared in 1977 and the work executed c1979-80 – noting that the existing jetty matches the design shown in the 1977 drawings (refer figures 22-24).

More recent accretions to Fisherman's Jetty include the security gate and signage at the jetty entrance, light fixtures, and the metal dock ladders along the length of the jetty with retractable platforms fabricated from expanded metal mesh.

The jetty is in poor structural condition and is currently closed to the public for safety reasons. Prior to its closure the jetty had a longstanding role in providing public boat berths.

It is possible that archaeological material related to earlier versions of Fisherman's Jetty and the past leisure and commercial activities of people using the jetty and its immediate surrounds survives underwater.

¹⁵ Ports and Harbors Division Public Works Department Drawing Register 1936-39, Drawing No. 55/168. Source: Parks Victoria.



Figure 26 View from Mothers Beach looking north-west towards Mornington Harbour.



Figure 27 View from Schnapper Point looking east towards Mornington Pier (left) and Fisherman's Jetty (far right).



Figure 28 View from the Schnapper Point lookout south towards the Mornington Yacht Club. Fisherman's Jetty is to the far left.



Figure 29 View from Mornington Pier looking south-west towards Fisherman's Jetty and the Mornington Yacht Club.



Figure 30 The Mornington Yacht Club and Fisherman's Jetty viewed from the south.



Figure 31 Fisherman's Jetty viewed from the west.



Figure 32 The north side of Fisherman's Jetty.



Figure 33 Fisherman's Jetty showing typical construction method.

7.0 Previous Heritage Assessments

Municipal Heritage Studies

The 1992 *Shire of Mornington Heritage Study* (Graeme Butler & Associates) included a citation for Mornington Pier (referred to as the Schnapper Point pier). Fisherman's Jetty is only mentioned in passing in the citation's history and it is not referred to in either the description or statement of significance, as reproduced below:

Description

The timber pier appears to be in two main sections, the older section near the shore and the other, with its new decking and steel balustrade, at another level further east. New steel bollards have been installed (PMA?) and early basalt walling and paving exists on the pier's north side. Some of this walling may relate to widespread (and recent?) seawall construction carried out further south along the foreshore. Another element is an electricity supply department cast-iron junction box/pillar at the approach to the pier, the initials 'CMC' are on the side and a crest.

Significance

The Schnapper Point pier is significant (in part) on a State-wide basis as one of a small group of piers built in the 1850s by the new Colonial Government to open up the carriage of produce to and from the remote parts of the colony. It has a high local significance as the major point of entry into the shire from the earliest period of the district's permanent settlement, aiding in the development of markets and the hinterland, and the berthing point for fisherman, another early industry. Via the bay cruisers, the pier soon also became the entry point for another major industry in the district, that of tourism, which continued well into this century prior to the impact of the motor car in the 1920s. Subsequently it has served both leisure and business activities although on a lesser scale.

The omission of Fisherman's Jetty from the 1992 heritage study citation was presumably the reason that it was also excluded from the heritage overlay as applied to the Mornington Pier.

Mornington Peninsula Shire have more recently undertaken a review of past heritage studies to identify any gaps. For the purposes of this review, the municipality was divided into four areas. Mornington was included in Area 1, the review of which was completed in 2013 [refer *Mornington Peninsula Heritage Review Area 1 – Mount Eliza, Mornington, Mount Martha Background Report December 2013* (Context Pty Ltd, Heritage Intelligence Pty Ltd, Built Heritage Pty Ltd)]. It is understood that the 2013 review did not reassess places that were already listed on the heritage overlay – hence Mornington Pier was not included.

Noting that the Mornington Peninsula Shire heritage study review occurred not that long ago (and was intended to be comprehensive in scope), it is not anticipated that Council will initiate further heritage studies in the near future.

Mornington Peninsula Shire Thematic History

Concurrent with the municipal wide heritage review, a Thematic History was prepared by Context Pty Ltd for the Mornington Peninsula Shire in 2013. The Thematic History provides an overview of the evolution of the municipality's physical environment and is arranged according to historic themes. Chapter 4 of the Thematic History addresses the theme of 'utilising natural resources' and includes discussion on the topic of recreational fishing, with specific reference to Fisherman's Jetty:

By the early twentieth century a fishermen's jetty and shed existed alongside the Mornington Pier, on the site where the Yacht Club now stands. Not only did the jetty sustain professional fishermen, but it was extolled as a tourist attraction for amateurs as well.

From Victorian times fishing was regarded not only as a commercial venture but as one of the most enjoyable sporting and recreational activities. The abundance and great variety of fish in the Peninsula waters have attracted many holiday-makers over the years ...¹⁶

Thematic History also makes the following concluding comments on significance of fishing to the broader municipality:

Fishing (with lime making) was the main determining factor behind development of coastal settlements on both Western Port and Port Phillip bays within the Shire. The industry remained active if less dominant into the twenty-first century with a major growth in recreational fishing along with the other coastal recreational options on the Peninsula for urban dwellers.¹⁷

Victorian Heritage Register Nomination

As noted, Mornington Pier was nominated for inclusion on the Victorian Heritage Register c2001. The Executive Director of Heritage Victoria recommended the nomination be refused for the following reasons:

The Mornington Pier has considerable local significance for its historical associations with the early development of the Peninsula and with the early bay trade of the mid-1850s. It is likely that some of the masonry fabric of the first stage of the pier remains, but it is difficult to discern the various stages in the existing structure. The Mornington Pier also has local significance for its historical associations with the Bay excursion trade from the 1880s to the 1920s. The higher section at the eastern end of the pier relates to this period, but the northern arm has been removed and there are no buildings or other structures remaining on the pier from either significant period. The pier forms an essential part of a precinct of local historical significance relating to the excursion era, which includes the Mothers Beach, Schnapper Point and Mornington Park.¹⁸

¹⁶ Mornington Peninsula Shire Thematic History, p.57.

¹⁷ Mornington Peninsula Shire Thematic History, p.61.

¹⁸ Recommended Action on a Nomination to the Victorian Heritage Register – Mornington Pier. Dated 5/4/2001.

The pier is of local social significance as a focus for holiday promenading and recreational fishing. The Mornington Pier is recommended for protection under a heritage overlay in the Local Planning Scheme

Fisherman's Jetty is not mentioned in the Executive Director's determination, and it is not clear if it was included in the nomination.

Heritage Inventory

The Heritage Inventory Site Record for Mornington Pier provides a description of the 'key components' of the site and statement of significance as follows:

Key Components of Site

Stone breakwater and timber pile jetty. Potential for Associated archaeological deposits relating to the structure and its use.

Statement of Significance

The Mornington Pier is of local historical, social and archaeological significance. The pier has been influential in shaping the development of Mornington and is historically important for its association with bay trade during the mid 19th century. The pier is of local social significance for its continuing association with passive recreational activities including promenading and angling. There is some potential for archaeological deposits to be located on the seafloor adjacent to the existing pier and areas where additions were once located, for example, the area of the former "L"-shaped extension.

While not specifically mentioned in the statement of significance, Fisherman's Jetty would appear to be referenced in the history attached to this Heritage Inventory listing and is included in the listing's mapped curtilage (refer Figure 2).

Piers and Jetties of Port Phillip

Heritage Information: Piers and Jetties of Port Phillip (Robin Crocker & Associates, July 2004) provides a summary of available heritage information on piers and jetties in Port Phillip managed by Parks Victoria. It was prepared as a reference tool for Parks Victoria staff to help ensure that heritage values are fully considered when planning maintenance, reconstruction or demolition works. The report included a datasheet for Mornington Pier with the commentary on its significance and the implications of this on the management of the structure (reproduced below). As is the case for most of the previous heritage assessments of Mornington Pier, no specific reference is made to Fisherman's Jetty:

Statement of Significance

Major infrastructure facility for economic development – both trade and tourism. Also a key visual and functional component of the picturesque Mornington bayside environment, but little or no structural fabric survives from the period of primary significance. Significance therefore lies in historical associations, with transport, bay ferries and more recent recreational use, and this should be the focus of conservation activities.

Management implications

Conserve function and character of pier.

Ensure that any works meet requirements of Mornington Peninsula Shire Council Planning Scheme overlays.

Heritage Victoria has requested that their staff be contacted if substantial works are proposed for any piers or jetties (including those not on the Victorian Heritage Register or Inventory) where artefacts may exist in adjacent waters, ie within about 25 m.

Mornington Safe Harbour Project

A cultural heritage assessment was prepared in April 2009 for all non-indigenous place in the area affected by the Mornington Safe Harbour development.¹⁹ Inter alia, the objectives of the 2009 assessment were to identify the nature and significance of the place, provide advice about identified constraints and opportunities, and appropriate management options for all non-indigenous cultural heritage place identified in the study.

Fisherman's Jetty was identified as being of high local significance, meeting Heritage Criterion A, C, F & G as follows:

Criterion A: The historical importance, association with or relationship to Victoria's history of the place or object.

Criterion C: The place or object's potential to educate, illustrate or provide further scientific investigation in relation to Victoria's cultural heritage.

Criterion F: The importance of the place or object in demonstrating or being associated with scientific or technical innovations or achievements.

Criterion G: The importance of the place or object in demonstrating social or cultural associations.

The study also included the following statement of significance for Fisherman's Jetty:

The Fishermen's Jetty dates to the early twentieth century. It is of local historical significance for its association with the intensification of commercial and recreational fishing in the area. The jetty is reflective the time when commercial fishing followed the spread of European occupation around the bay. Some members of the structure appear to have been replaced on occasion. There is some potential for archaeological deposits to be located on the sea floor adjacent to the jetty. Artefacts associated with the use of the jetty may be present on the sea floor adjacent to the structure.²⁰

¹⁹ SKM/Renee Gardiner, *Mornington Safe Harbour Appendix B – Planning Report: Cultural Heritage Assessment* (Final Version 15 April 2009).

²⁰ SKM/Renee Gardiner, *Mornington Safe Harbour Appendix B – Planning Report: Cultural Heritage Assessment*, p.35.

Conservation Management Plans

No conservation management plans are known to have been prepared for Mornington Harbour or any of its constituent parts.

8.0 Policy & legislation

Heritage Act

As noted, Mornington Pier (and an area of the harbour encompassing Fisherman's Jetty) is included in the Heritage Inventory as place number H7921-0110. The Victorian Heritage Inventory is established under the *Heritage Act 2017* and administered by Heritage Victoria. It is an inventory of known historical (non-indigenous) archaeological sites and elements, including above and below ground artefacts and ruins, and in some cases sites of archaeological potential.

No person can knowingly excavate or disturb a Heritage Inventory site or archaeological site without obtaining a consent from the Executive Director of Heritage Victoria, as set out in Sections 123 of the *Act*. In determining whether to issue a consent to disturb a site on the Heritage Inventory, Section 124(3) of the *Act* states that the Executive Director must consider:

- (a) any relevant archaeological, historical or other research; and
- (b) the potential of the site or archaeological artefact to contribute to such knowledge.

The Heritage Inventory listing for Mornington Pier does not appear to relate to any specific known archaeological material, but is instead speculative, noting that the Heritage Inventory site card refers to the 'potential' for archaeological deposits (refer section 7 of this report). As such, a Consent application should include the results of a dive survey to inform the methodology proposed for the management of any potential archaeology.

Local Planning Polices

The provisions of the *Mornington Peninsula Planning Scheme* relevant to heritage overlay places are those at:

- Clause 15.03-1S - Heritage Conservation
- Clause 15.03-1L-01 - Heritage Conservation Mornington Peninsula
- Clause 43.01 - Heritage Overlay

Clause 43.01 applies specifically to places included in the Schedule to the Heritage Overlay, which in the instance of Mornington Harbour, is limited to Mornington Pier and a small area of the adjoining foreshore. As such, works to Fisherman's Pier and areas of the harbour outside of the Mornington Pier's heritage overlay curtilage would not be subject to the requirements of Clause 43.01.

9.0 Conclusion

It is apparent that previous heritage assessments of Mornington Harbour have generally focussed on Mornington Pier, with Fisherman's Jetty receiving scant attention. Consequently, the jetty is not included in the Heritage Overlay listing for Mornington Pier. It is not clear if the jetty was purposefully excluded from most of the heritage assessments pertaining to the harbour, or whether it was inadvertently overlooked. Regardless of this, the exclusion of Fisherman's Jetty from the Heritage Overlay is an appropriate outcome given that it was entirely rebuilt c1979-80. That is to say, the fabric of the jetty is not considered to be of significance. The jetty may nonetheless have social value to the local community arising from its longstanding use for boating and other recreational activities.

The jetty is also of potential archaeological significance, noting again that is included in the curtilage for the Mornington Pier Victorian Heritage Inventory listing. This brings with it obligations under the *Heritage Act*, as summarised in section 8 of this report. Fisherman's Jetty presently has no other heritage listings that bring into effect statutory planning controls.