

# Victorian Notice to Mariners

The following Notice to Mariners is published for general information.

**3 May 2024**  
Australia – Victoria

**No. 185(T) – 2024**

**Local Port of Port Phillip**

**Bellarine Peninsula**  
**Indented Head to Queenscliff – Beacon Remediation Works**

**Date:** 6 May 2024 to 31 May 2024, weather permitting.

**Details:** Mariners are advised of remediation works utilising a piling barge to **remove and re-establish** five (5) port hand lateral piles located near Indented Head, Queenscliff, and Symonds Channel. The works will be undertaken over a day between the date range above. Light characteristics will be unaffected. The locations (WGS84) are tabled below and illustrated as Figure 1.

The pile replacement works will be supported by the following vessels:

- Pile Driving Barge, 18m
- EDS *Eureka*, 18m barge
- EDS *Mundu*, 15m vessel
- EDS *Pindar*, 12m vessel

Port Lateral Beacon	Position	Light Characteristic
Prince George	38°6.42'S 144°44.22'E	Fl(1)R 4s7m8M
Prince George 4	38°7.68'S 144°44.28'E	Q(1)R 4m3M
Prince George 2	38°9'S 144°44.46'E	Fl(1)R 3s4m3M
Symonds Channel	38°13.56'S 144°48.54'E	Q(1)R 9m8M
Drapers Reef	38°16.32'S 144°40.02'E	Q(1)R 6m4M

**Mariners are advised to navigate with caution in the vicinity of the works and requested to avoid wake and wash within 100m of the vessels undertaking work.**

**Charts & Publications**

**Affected:** AUS 143, AUS 144, AUS 157, AU5RIP01

**Further Notice:** A further Notice will be issued.

**If you require any further information, please contact Elstone Diving Services on 0418 599 397.**

David Ritman  
Manager Regional Planning  
Southern and Maritime Region

If you wish to receive Parks Victoria issued Notice to Mariners, please email your details to [noticetomariners@parks.vic.gov.au](mailto:noticetomariners@parks.vic.gov.au). To view Notices, visit [www.parks.vic.gov.au](http://www.parks.vic.gov.au)

Figure 1: Chartlet Illustrating Beacon Locations

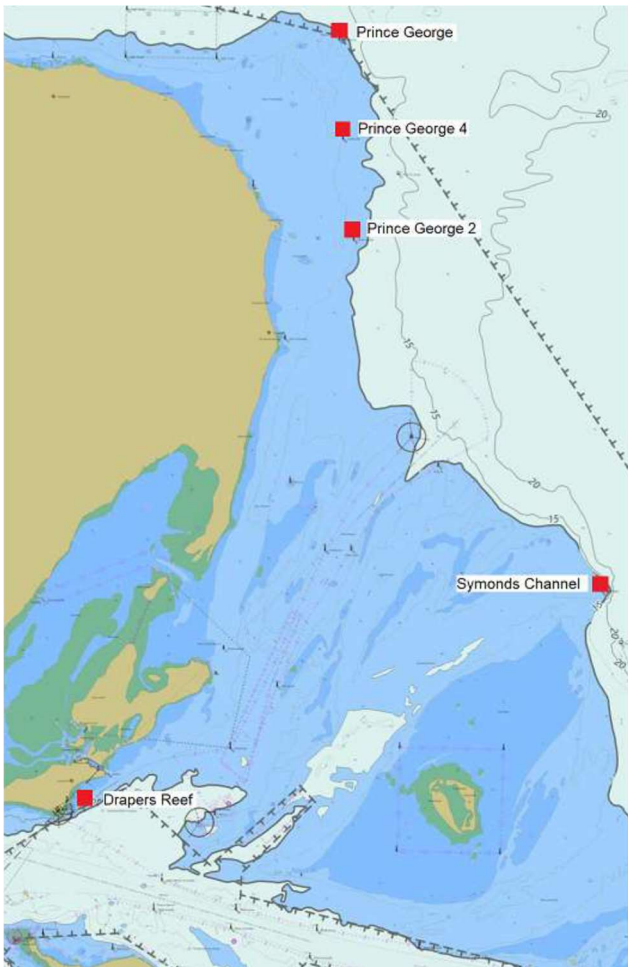


Figure 2: 18m pile driving barge utilised for works

