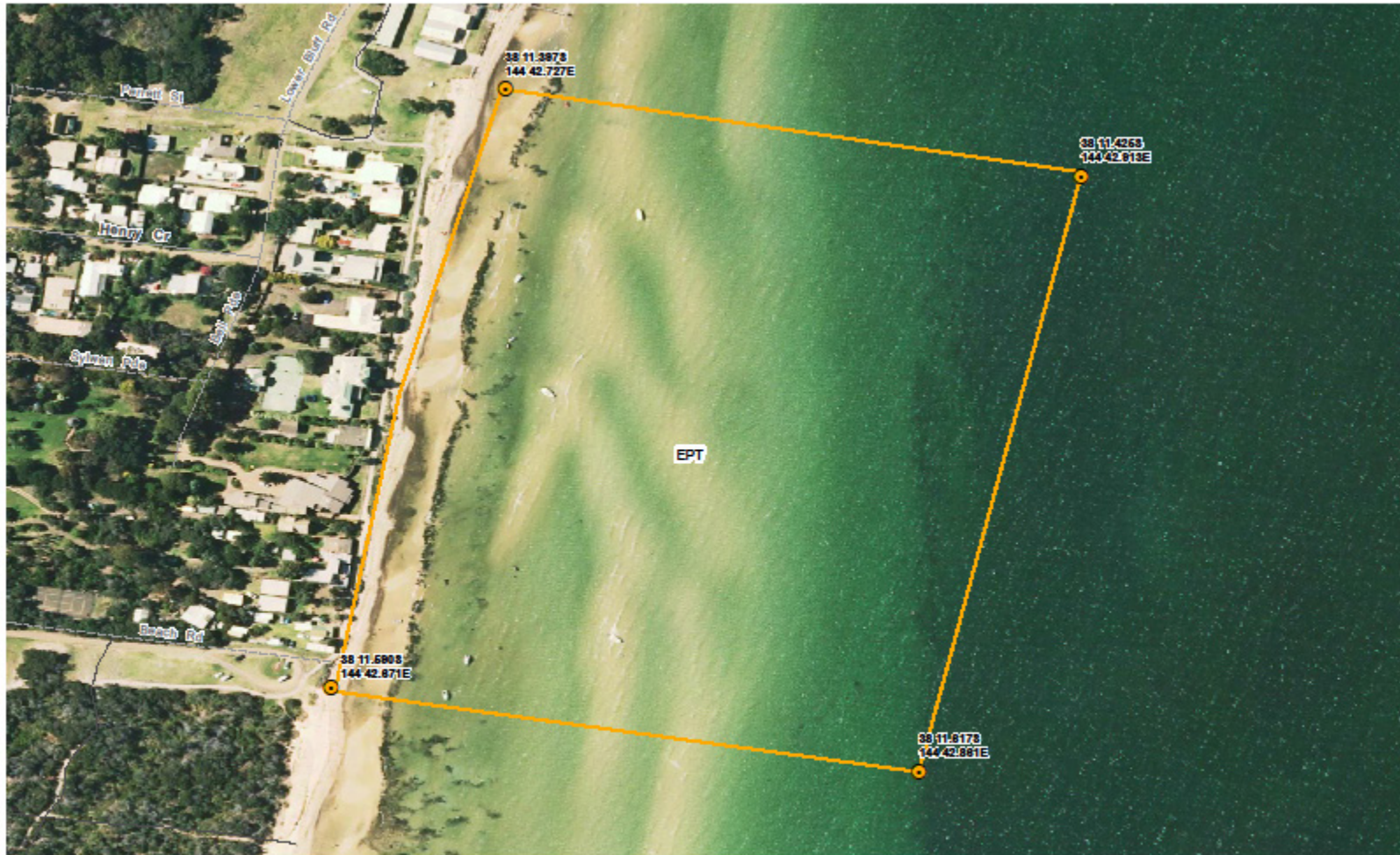


Mooring Ground Information Edwards Point




Mooring Location	Edwards Point, Port Phillip
Set Aside Name	Edwards Point
Melways Reference	Map 474 B3
Boundaries	As per map
Agent Managing	Parks Victoria - Queenscliff office
Status	Sites available
Waiting List	NO
Local Features	South of St Leonards Yacht Club & Motor Squadron
Public Moorings present	NO
Availability of Temporary Moorings	NO
Weather Conditions	The Edwards Point mooring ground is situated approximately 100 metres from shorer which protects it from westerly weather conditions. This area is however susceptible to Easterly weather aspects. Tide range 1.2 metres. Inshore vessels sit on bottom on low tide. This area is exposed to easterly storms due to fetch. Vessels are usually removed from moorings during winter months on an as needs basis if storms approach over the remaining seasons.
Tackle Requirements	Buoys : As specified by an Authorised Mooring Tackle Contractor and must display site identification number at all times
	Chain : As specified by an Authorised Mooring Tackle Contractor
	Weights : As specified by an Authorised Mooring Tackle Contractor
Tender Arrangements	NO
Access	Access is off Beach Street or Lower Bluff Rd and limited car parking facilities are available



Edwards Point Mooring Set Aside Port Phillip

22/05/2015
Coordinate System: GCS WGS 1984
Datum: WGS 1984

- Mooring set aside points
- ▭ Mooring set aside 2015

Parks VICTORIA MULTICULTURAL DIVERSITY   

Disclaimer: Parks Victoria does not guarantee that this data is without error and therefore disclaims all liability which may arise from you relying on this information. Data source acknowledges State Digital Mapbase, The State of Victoria and the Department of Environment, Land, Water and Planning