

Mooring Ground Information

French Island

Mooring Location	French Island, Western Port
Set Aside Name	French Island (Peck Point, Tankerton, Tortoise Head & Elizabeth Island)
Melways Reference	Page 17 Key Map M21
Boundaries	<p>An area approximately 260 metres in a Westerly direction from the Main Jetty Head to a line running in a Northerly direction approximately 130 meters extending then in an Easterly direction 260 meters in the direction of the shoreline.</p> <p>The channel into the Main Jetty is excluded as a mooring area.</p> <p>A set aside area in Blake's Channel approximately 450 meters in an Easterly direction from an access point at the end of The Anchorage on the Southern side of the island. A set aside area (Peck Point) approximately 450 meters east of The Center Way. A set aside area around the Elizabeth Island Jetty extending approximately 30 meters East of the jetty head. (check local office for GPS coordinates).</p>
Agent Managing	Parks Victoria – San Remo office
Status	Sites in Blakes Channel and at the Main Jetty set aside areas available. Peck Point and Elizabeth Island locations are to capacity.
Waiting List	No
Local Features	Boat ramp access at Stony Point on the mainland and Tankerton boat ramp. Main Jetty access.
Public Moorings present	No
Availability of Temporary Moorings	No
Weather Conditions	Exposed to SSW and NW winds at the Jetty boundary area. Sheltered from ENE and SSE. Blake's channel area exposed to SSE. Sheltered from NNE and SW.
Tackle Requirements	Buoys : Identification buoys are to be attached to the mooring at all times and the site ID number must be clearly visible and marked on both buoys. Two buoys are required one being an inflatable type (orange in colour) of no less than 600mm in diameter with the other being a smaller (orange in colour) pick up buoy.

	Chain : As specified by an Authorised Mooring Tackle Contractor
	Weights : As specified by an Authorised Mooring Tackle Contractor
Tender Arrangements	Tenders not permitted to moor but can remain on mooring whilst mother vessel is at sea
Access	Boat ramp access at Stony Point on the mainland and Tankerton boat ramp. Main Jetty access.
Contact	Parks Victoria 13 19 63



French Island Peck Point Mooring Set Aside
Western Port

38962018
Coordinate System: GCS WGS 1984
Datum: WGS 1984

● Mooring set aside points
■ Mooring set aside 2015

38962018
Coordinate System: GCS WGS 1984
Datum: WGS 1984



French Island Tankerton Mooring Set Aside
Western Port

38962018
Coordinate System: GCS WGS 1984
Datum: WGS 1984

● Mooring set aside points
■ Mooring set aside 2015

38962018
Coordinate System: GCS WGS 1984
Datum: WGS 1984

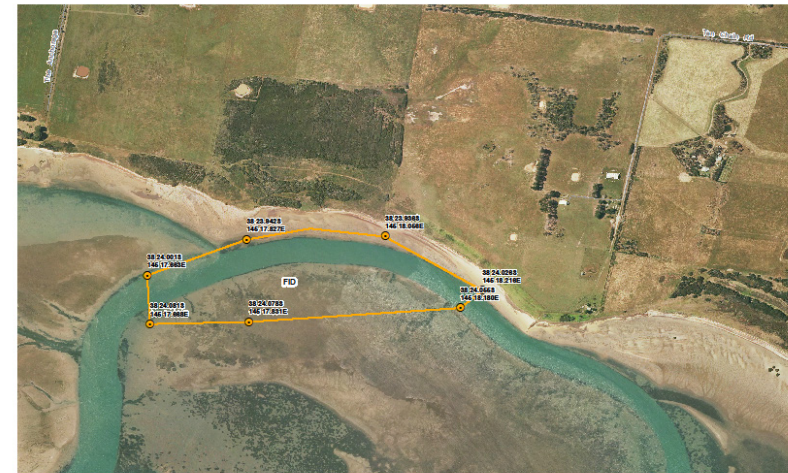


Elizabeth Island Mooring Set Aside
Western Port

38962018
Coordinate System: GCS WGS 1984
Datum: WGS 1984

● Mooring set aside points
■ Mooring set aside 2015

38962018
Coordinate System: GCS WGS 1984
Datum: WGS 1984



French Island Tortoise Head Mooring Set Aside
Western Port

38962018
Coordinate System: GCS WGS 1984
Datum: WGS 1984

● Mooring set aside points
■ Mooring set aside 2015

38962018
Coordinate System: GCS WGS 1984
Datum: WGS 1984